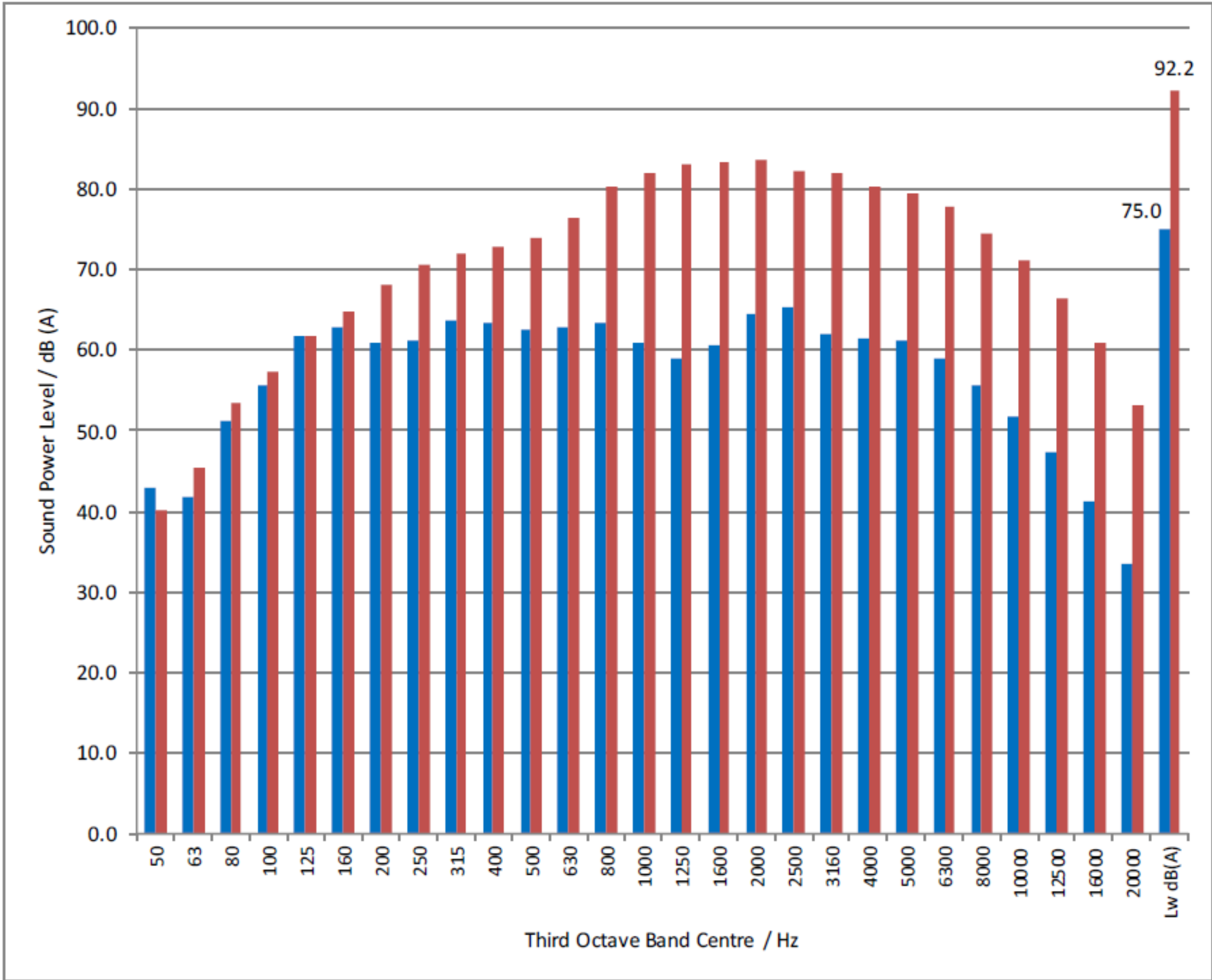


EKLN140A

1/3 octave band	L _w dB(A)	RSS	IL dB
50	43.0	40.1	-2.9
63	41.8	45.3	3.6
80	51.2	53.5	2.3
100	55.6	57.4	1.8
125	61.7	61.8	0.1
160	63.0	64.8	1.8
200	60.9	68.0	7.1
250	61.2	70.6	9.4
315	63.7	71.9	8.2
400	63.5	72.8	9.3
500	62.6	73.9	11.2
630	62.9	76.5	13.7
800	63.4	80.2	16.8
1000	61.0	82.0	21.0
1250	59.1	83.1	24.0
1600	60.6	83.4	22.8
2000	64.4	83.7	19.3
2500	65.3	82.3	17.0
3160	62.1	82.0	20.0
4000	61.6	80.2	18.6
5000	61.1	79.6	18.5
6300	59.1	77.7	18.7
8000	55.6	74.4	18.8
10000	51.8	71.1	19.4
12500	47.2	66.5	19.3
16000	41.4	60.9	19.6
20000	33.4	53.1	19.8
Lw dB(A)	75.0	92.2	17.2



Legend

- RSS: Reference sound source
→ B&K type 4204 RSS
- IL : Insertion loss
- L_w : Sound Power Level [dBA]