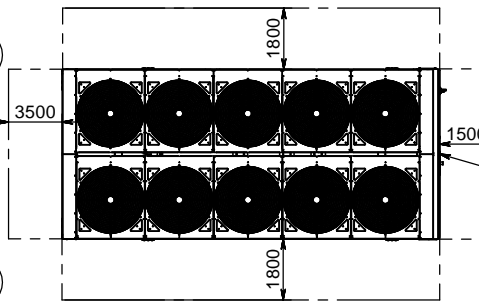
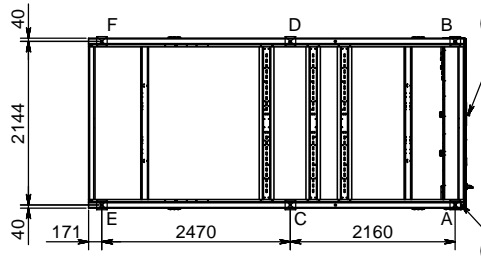
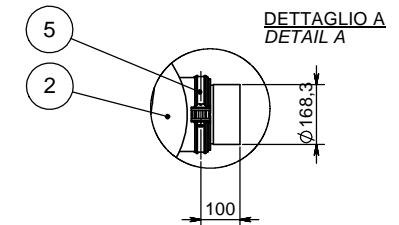


LEGENDA - LEGEND

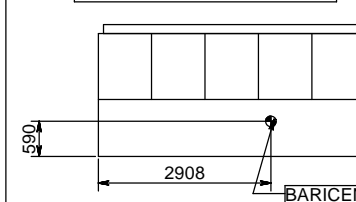
1. BATTERIA CONDENSANTE
CONDENSER COIL
2. EVAPORATORE
EVAPORATOR
3. ENTRATA ACQUA POMPA
PUMP WATER INLET
4. USCITA ACQUA EVAPORATORE
EVAPORATOR WATER OUTLET
5. CONNESSIONI EVAPORATORE VICTAULIC PER TUBO Ø168.3
VICTAULIC EVAPORATOR CONNECTIONS Ø168.3 O.D. PIPE
6. PANNELLO DI COMANDO E CONTROLLO
OPERATING AND CONTROL PANEL
7. ASOLA 330x180 INGRESSO ALIMENTAZIONE PANNELLO COMANDO E CONTROLLO
330x180 SLOT FOR POWER AND CONTROL PANEL CONNECTION
8. PIASTRE PER SOLLEVAMENTO UNITA'
RAISING PLATE
9. FORI Ø25 mm PER MONTAGGIO ANTIVIBRANTI
ISOLATOR MOUNTING HOLES Ø25 mm
10. GRIGLIE PROTEZIONE BATTERIE (OPTIONAL)
COIL PROTEZION GUARDS (OPTIONAL)
11. CABINA INSONORIZZANTE COMPRESSORE (OPTIONAL)
COMPRESSOR SOUND ENCLOSURE (OPTIONAL)



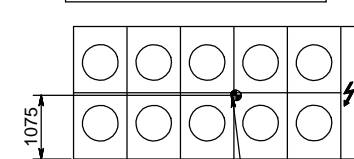
CONNESSIONE FORNITA A CORREDO
 CONNECTION SHIPPED LOOSE



VISTA LATERALE / SIDE VIEW



VISTA DALL'ALTO / TOP VIEW



VERSIONE VERSION	TIPO CONDENSATORE CONDENSER TYPE	PESO / WEIGHT KG		CARICHI ANTIVIBRANTI KG ISOLATOR LOADS KG					
		SPEDIZIONE SHIPPING	FUNZIONAMENTO OPERATING	A	B	C	D	E	F
SS	ALLUMINIO / ALUMINUM	5152	5422	1057	1070	980	1032	581	702
	ACRYLIC COATED								
SR	ALLUMINIO / ALUMINUM	5348	5618	1090	1104	1024	1076	600	724
	ACRYLIC COATED								
ANTIVIBRANTI IN GOMMA RUBBER ISOLATORS		MODELLO (Q.tà) / TYPE (Q.ty)		91226 (6Pz.)					
ANTIVIBRANTI A MOLLA SPRING ISOLATORS		MODELLO (Q.tà) / TYPE (Q.ty)		91235 (2Pz.)		91235 (2Pz.)		91233 (2Pz.)	