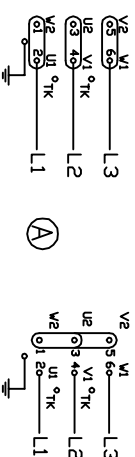
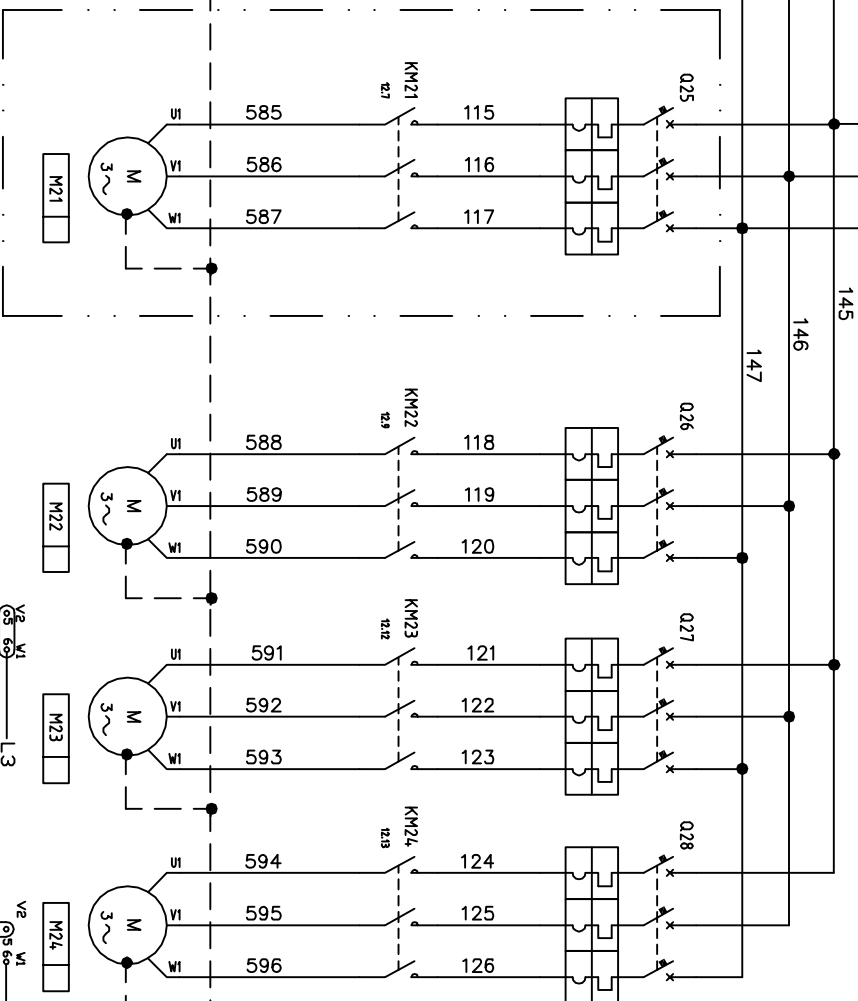
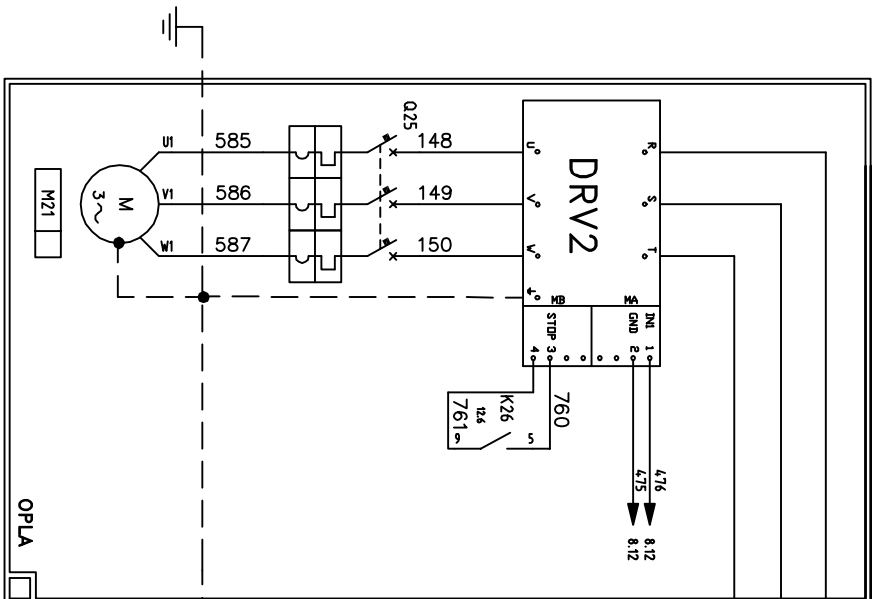
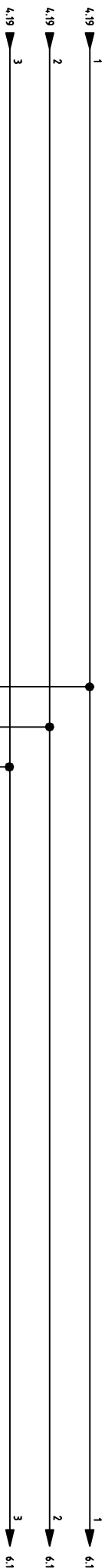
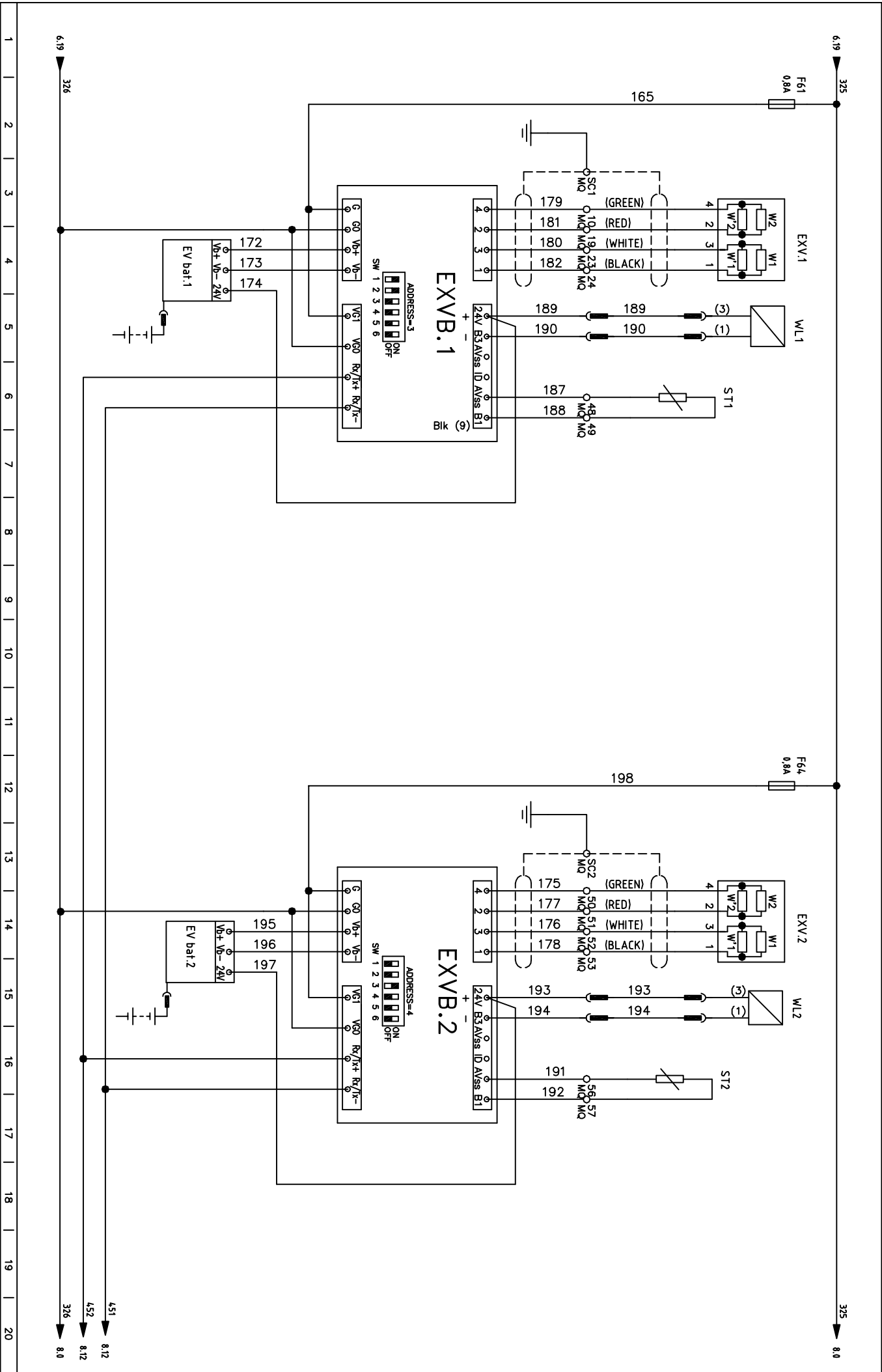
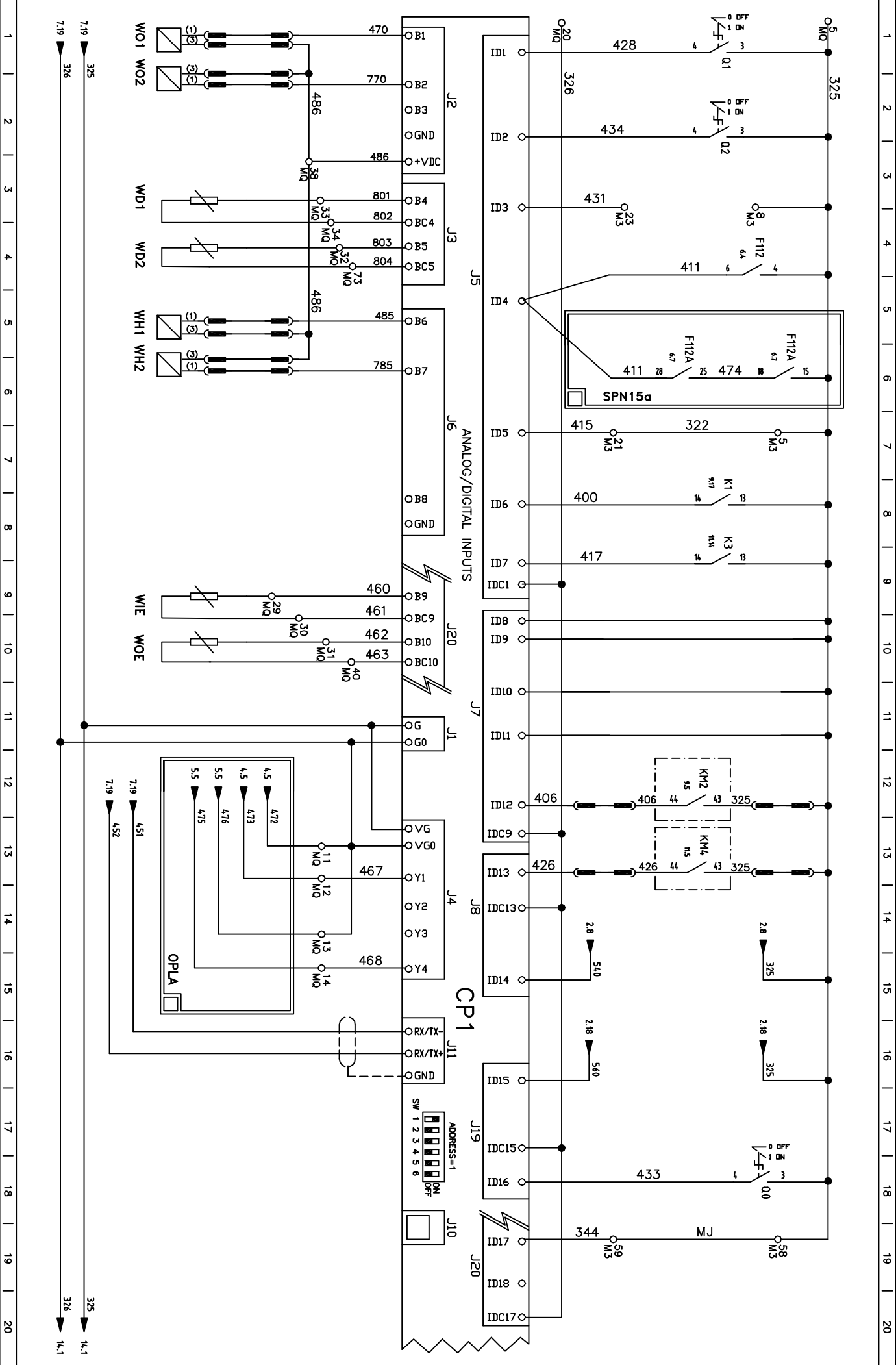


1 2 3 4 5 6 7 8 9 10 11 12 13 14 15 16 17 18 19 20

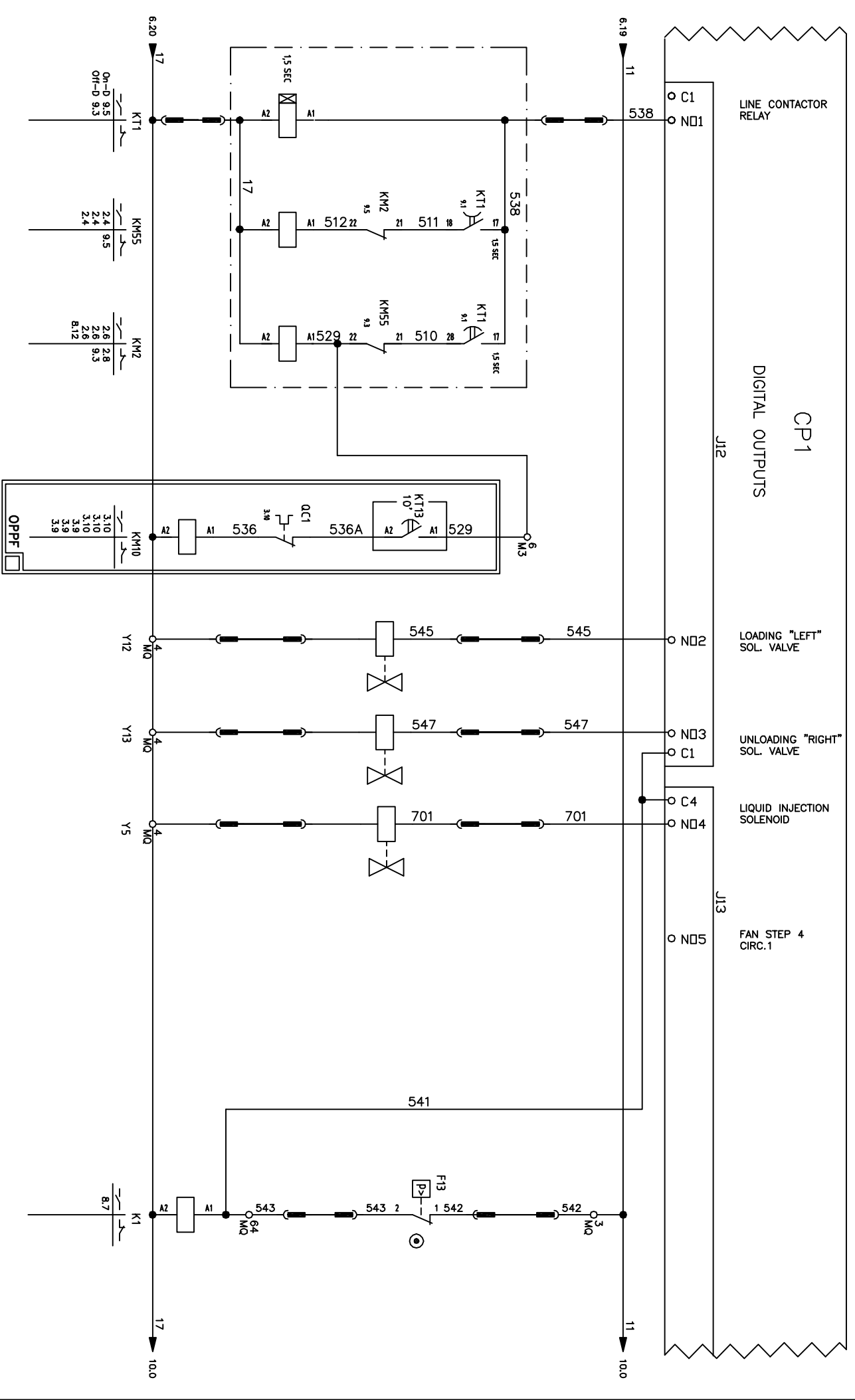


1 2 3 4 5 6 7 8 9 10 11 12 13 14 15 16 17 18 19 20

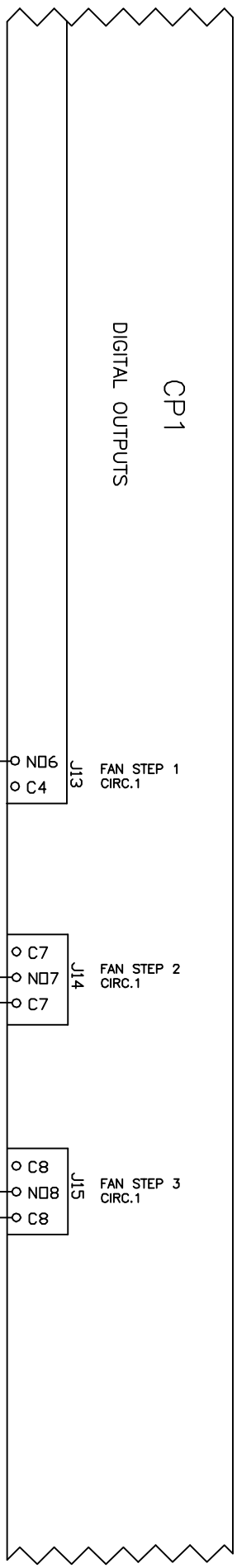




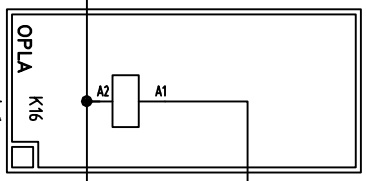
1 2 3 4 5 6 7 8 9 10 11 12 13 14 15 16 17 18 19 20



1 | 2 | 3 | 4 | 5 | 6 | 7 | 8 | 9 | 10 | 11 | 12 | 13 | 14 | 15 | 16 | 17 | 18 | 19 | 20



9.19 11 11 11.0



700

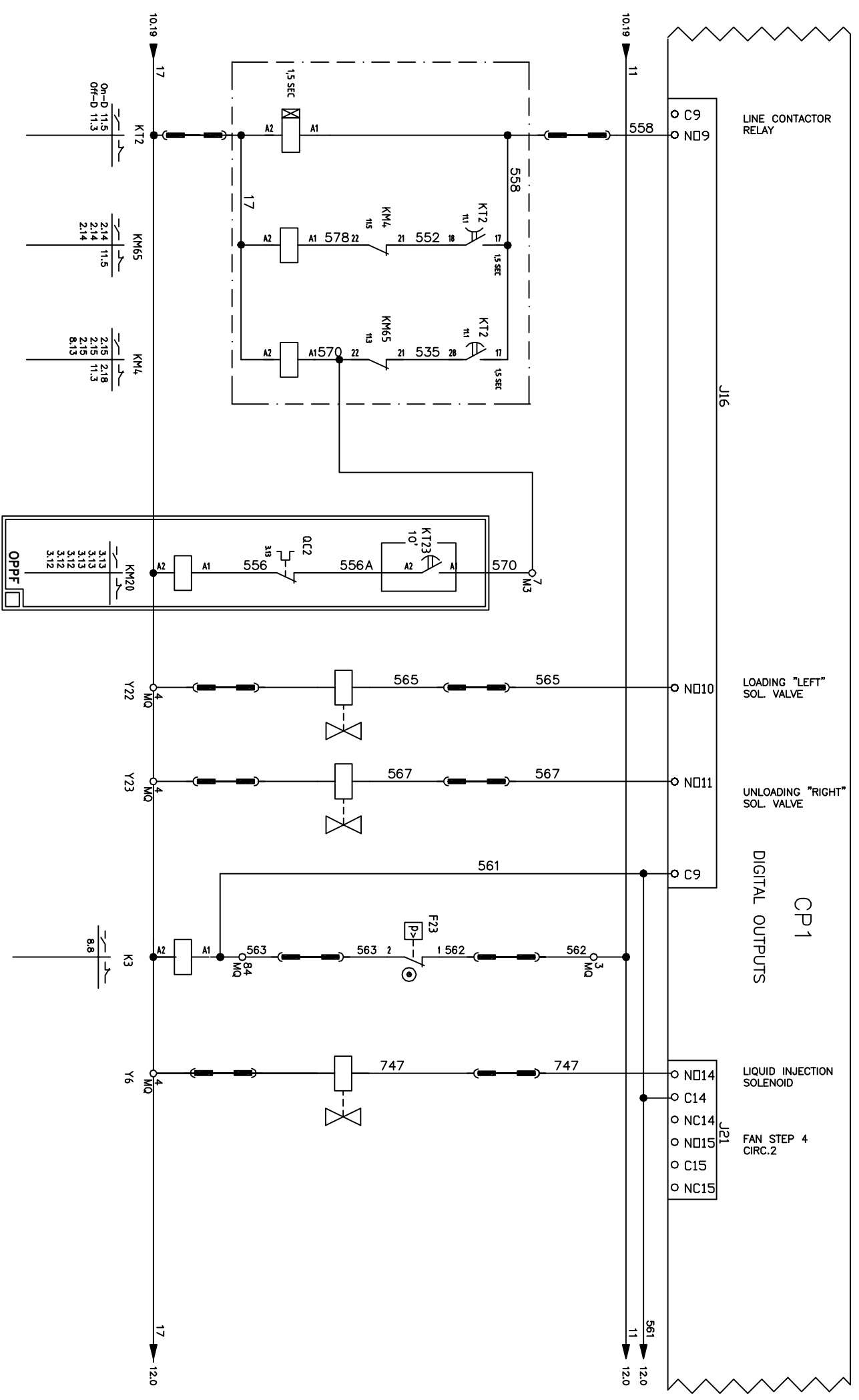
708

716

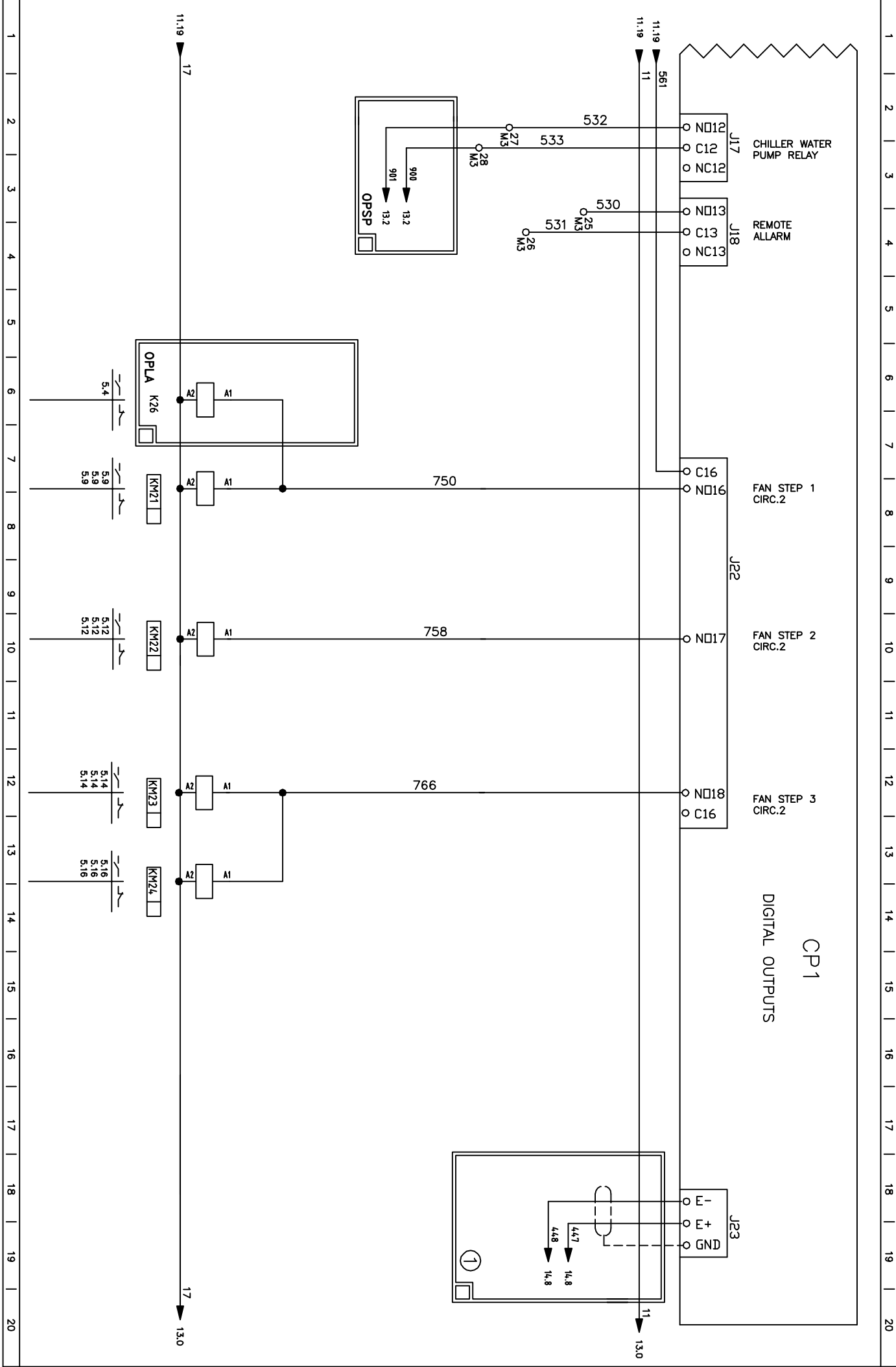
9.19 17 17 11.0

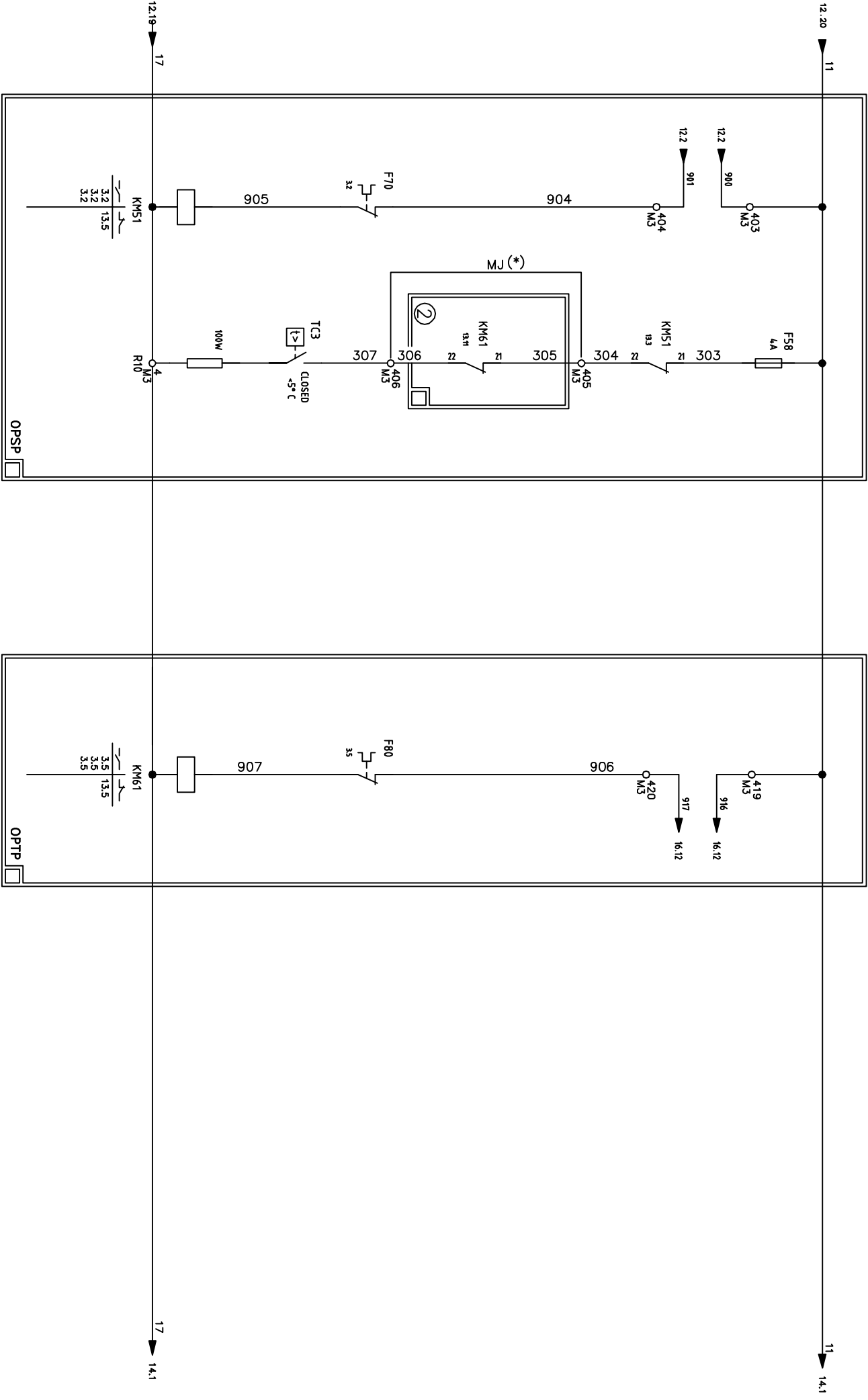


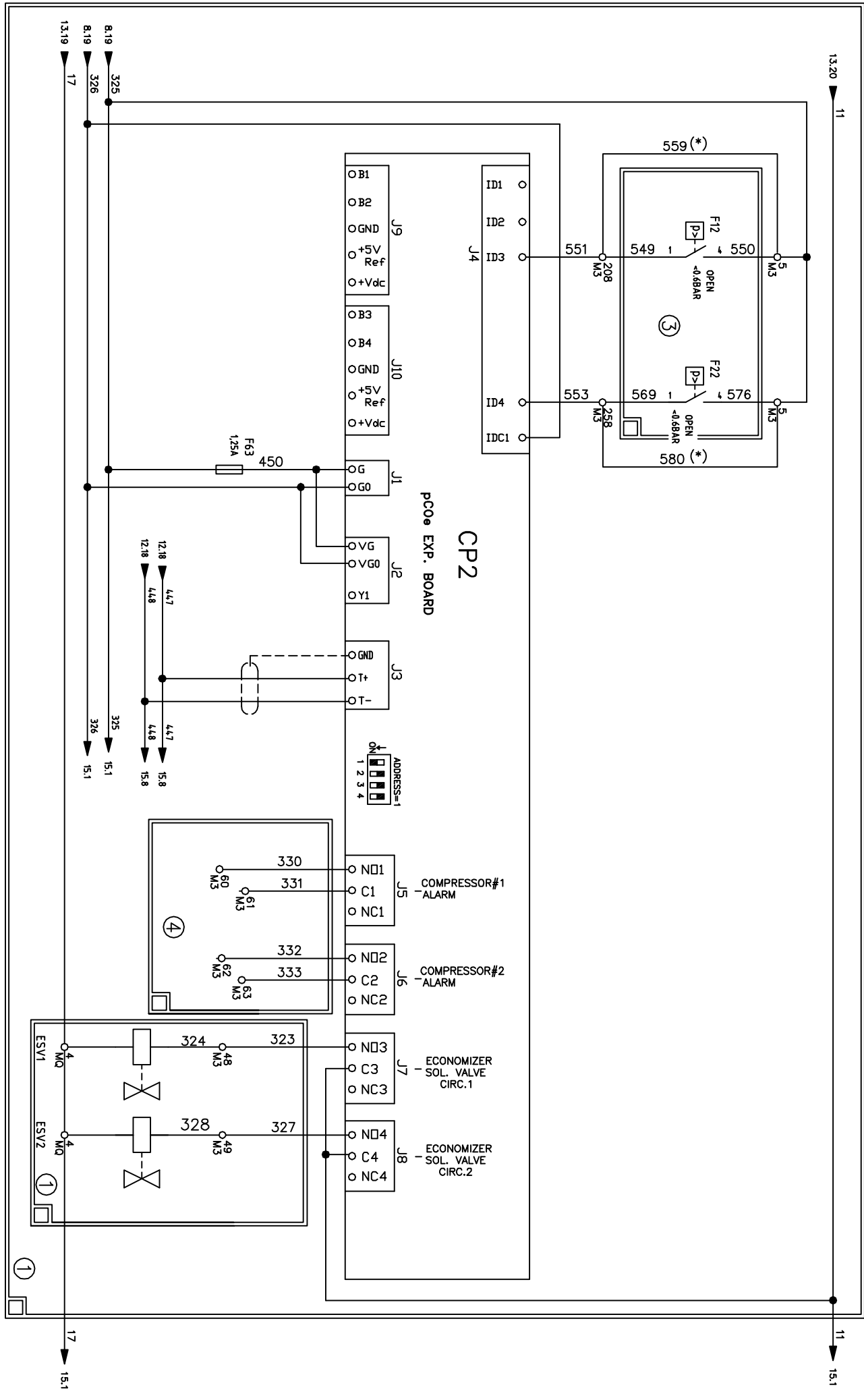
1 | 2 | 3 | 4 | 5 | 6 | 7 | 8 | 9 | 10 | 11 | 12 | 13 | 14 | 15 | 16 | 17 | 18 | 19 | 20



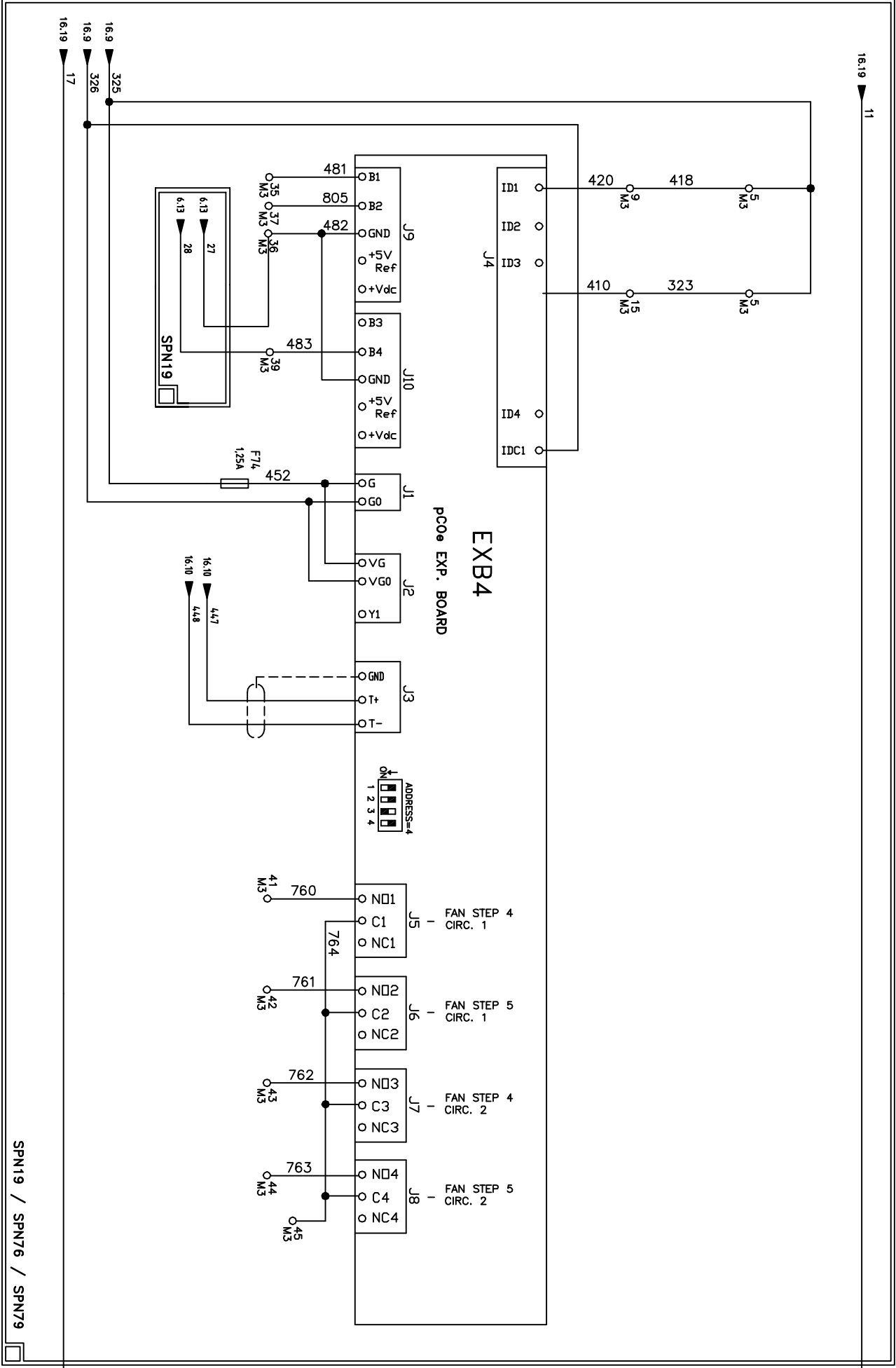
1 2 3 4 5 6 7 8 9 10 11 12 13 14 15 16 17 18 19 20







1 2 3 4 5 6 7 8 9 10 11 12 13 14 15 16 17 18 19 20

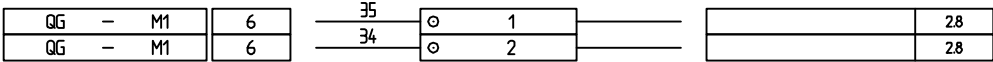


SPN19 / SPN76 / SPN79

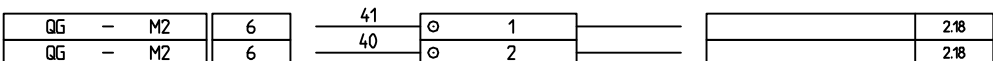
1 2 3 4 5 6 7 8 9 10 11 12 13 14 15 16 17 18 19 20

1 | 2 | 3 | 4 | 5 | 6 | 7 | 8 | 9 | 10 | 11 | 12 | 13 | 14 | 15 | 16 | 17 | 18 | 19 | 20

TERMINAL COMPRESSOR 1



TERMINAL COMPRESSOR 2



1 | 2 | 3 | 4 | 5 | 6 | 7 | 8 | 9 | 10 | 11 | 12 | 13 | 14 | 15 | 16 | 17 | 18 | 19 | 20

ELETRICAL PANEL TERMINAL

DAIKIN EUROPE NV

DESCRIPTION:

TERMINALS MQ

REFEREMENT:

MASTER

N°: 180245

REVISIONE / REVISIONS: 6

SHEETS: 26 | PAG.: 20

1 | 2 | 3 | 4 | 5 | 6 | 7 | 8 | 9 | 10 | 11 | 12 | 13 | 14 | 15 | 16 | 17 | 18 | 19 | 20

| | | | | | | | | | |
|----|---|----|---|-----|-----|----|-----|--|-------|
| QG | - | MQ | - | ○ | SC1 | | | | 72 |
| QG | - | MQ | - | ○ | SC2 | | | | 7.12 |
| QG | - | MQ | - | 11 | ○ | 3 | 562 | | 11.14 |
| QG | - | MQ | - | 11 | ○ | 3 | 542 | | 9.17 |
| QG | - | MQ | - | 11 | ○ | 3 | 11 | | 6.15 |
| QG | - | MQ | - | 17 | ○ | 4 | 17 | | 11.15 |
| QG | - | MQ | - | 17 | ○ | 4 | 17 | | 9.9 |
| QG | - | MQ | - | 17 | ○ | 4 | 17 | | 9.10 |
| QG | - | MQ | - | 17 | ○ | 4 | 17 | | 9.12 |
| QG | - | MQ | - | 17 | ○ | 4 | 17 | | 11.10 |
| QG | - | MQ | - | 17 | ○ | 4 | 17 | | 11.11 |
| QG | - | MQ | - | 17 | ○ | 4 | 17 | | 14.15 |
| QG | - | MQ | - | 17 | ○ | 4 | 17 | | 14.16 |
| QG | - | MQ | - | 17 | ○ | 4 | 17 | | 6.15 |
| QG | - | MQ | - | 17 | ○ | 4 | 17 | | 6.17 |
| QG | - | MQ | - | 17 | ○ | 4 | 17 | | 15.12 |
| QG | - | MQ | - | 17 | ○ | 4 | 17 | | 15.14 |
| QG | - | MQ | - | 361 | ○ | 5 | | | 6.12 |
| QG | - | MQ | - | 198 | ○ | 5 | 325 | | 8.0 |
| QG | - | MQ | - | 300 | ○ | 5 | 325 | | 6.2 |
| QG | - | MQ | - | 179 | ○ | 10 | | | 7.3 |
| QG | - | MQ | - | 467 | ○ | 12 | 473 | | 8.18 |
| QG | - | MQ | - | 50 | ○ | 13 | 476 | | 8.14 |
| QG | - | MQ | - | 468 | ○ | 13 | 475 | | 8.14 |
| QG | - | MQ | - | 181 | ○ | 14 | | | 7.3 |
| QG | - | MQ | - | 362 | ○ | 19 | | | 6.12 |
| QG | - | MQ | - | 326 | ○ | 20 | 326 | | 8.0 |
| QG | - | MQ | - | 321 | ○ | 20 | 326 | | 6.2 |
| QG | - | MQ | - | 180 | ○ | 20 | | | 7.3 |
| QG | - | MQ | - | 182 | ○ | 23 | | | 7.4 |
| QG | - | MQ | - | 460 | ○ | 24 | | | 8.9 |
| QG | - | MQ | - | 461 | ○ | 29 | 461 | | 8.9 |
| QG | - | MQ | - | 462 | ○ | 30 | | | 8.9 |
| QG | - | MQ | - | 803 | ○ | 31 | | | 8.3 |
| QG | - | MQ | - | 801 | ○ | 32 | | | 8.3 |
| QG | - | MQ | - | 802 | ○ | 33 | | | 8.3 |
| QG | - | MQ | - | 486 | ○ | 34 | | | 8.2 |
| QG | - | MQ | - | 463 | ○ | 38 | | | 8.10 |
| QG | - | MQ | - | 308 | ○ | 40 | 309 | | 6.17 |
| QG | - | MQ | - | 187 | ○ | 47 | | | 7.5 |
| QG | - | MQ | - | 188 | ○ | 48 | | | 7.6 |
| QG | - | MQ | - | 175 | ○ | 49 | | | 7.18 |
| QG | - | MQ | - | 177 | ○ | 50 | | | 7.18 |
| QG | - | MQ | - | 176 | ○ | 51 | | | 7.14 |
| QG | - | MQ | - | 178 | ○ | 52 | | | 7.14 |
| QG | - | MQ | - | 191 | ○ | 53 | | | 7.16 |
| QG | - | MQ | - | 192 | ○ | 56 | | | 7.16 |
| QG | - | MQ | - | 543 | ○ | 57 | 541 | | 9.17 |
| QG | - | MQ | - | 804 | ○ | 64 | 804 | | 8.4 |
| QG | - | MQ | - | 563 | ○ | 73 | 561 | | 11.14 |
| QG | - | MQ | - | | ○ | 84 | | | |

| ITEM | DESCRIPTION | SHEET | Q.ty |
|----------|--|-------|------|
| C1 | POWER FACTOR CORRECTION | 3 | 1 |
| C2 | POWER FACTOR CORRECTION | 3 | 1 |
| CP1 | ANALOG-DIGITAL INPUTS BOARD | 8 | 1 |
| CP2 | ECONOMIZER KIT AND ADDITIONAL HARDWARE EXP BOARD 1 | 14 | 1 |
| DRV1 | SPEEDTROL | 4 | 1 |
| DRV2 | SPEEDTROL | 5 | 1 |
| ESV1 | ECONOMIZER SOLENOID VALVE COMP.1 | 14 | 1 |
| ESV2 | ECONOMIZER SOLENOID VALVE COMP.2 | 14 | 1 |
| EV bat.1 | ELECTRONIC EXPANSION BATTERY VALVE | 7 | 1 |
| EV bat.2 | ELECTRONIC EXPANSION BATTERY VALVE | 7 | 1 |
| EXB2 | HEAT RECOVERY CONTROL EXPANSION BOARD 2 | 15 | 1 |
| EXB3 | WATER PUMP CONTROL EXPANSION BOARD 3 | 16 | 1 |
| EXB4 | FAN STEP CONTROL EXPANSION BOARD 4 | 17 | 1 |
| EXV.1 | ELECTRONIC EXPANSION VALVE | 7 | 1 |
| EXV.2 | ELECTRONIC EXPANSION VALVE | 7 | 1 |
| EXVB.1 | ELECTRONIC EXPANSION VALVE BOARD | 7 | 1 |
| EXVB.2 | ELECTRONIC EXPANSION VALVE BOARD | 7 | 1 |
| F1 | COMPRESSOR FUSES | 2 | 1 |
| F2 | COMPRESSOR FUSES | 2 | 1 |
| F9 | PUMP FUSES | 3 | 1 |
| F10 | FUSES | 2 | 1 |
| F12 | PRESSURE SWITCH | 14 | 1 |
| F13 | HIGH PRESSURE SWITCH | 9 | 1 |
| F20 | FUSES | 2 | 1 |
| F22 | PRESSURE SWITCH | 14 | 1 |
| F23 | HIGH PRESSURE SWITCH | 11 | 1 |
| F51 | THERMAL RELAY | 2 | 1 |
| F52 | THERMAL RELAY | 2 | 1 |
| F58 | PUMP HEATER FUSE | 13 | 1 |
| F59 | EVAPORATOR HEATER FUSE | 6 | 1 |
| F60 | PROTECTION AUX CIRCUIT FUSE | 6 | 1 |
| F61 | PROTECTION AUXILIARY CIRCUIT FUSE | 7 | 1 |
| F63 | PROTECTION AUXILIARY CIRCUIT | 14 | 1 |
| F64 | PROTECTION AUXILIARY CIRCUIT FUSE | 7 | 1 |
| F70 | PUMP MAGNETOTHERMAL | 3 | 1 |
| F72 | PROTECTION AUXILIARY CIRCUIT | 15 | 1 |
| F73 | PROTECTION AUXILIARY CIRCUIT | 16 | 1 |
| F74 | PROTECTION AUXILIARY CIRCUIT | 17 | 1 |
| F80 | PUMP MAGNETOTHERMAL | 3 | 1 |
| F9A | PUMP FUSES | 3 | 1 |
| F100 | FAN FUSES | 4 | 1 |
| F112 | PHASE VOLT MONITOR | 6 | 1 |
| F120 | TRANSFORMER 1 PROTECTION | 6 | 1 |
| F130 | PHASE VOLT MONITOR FUSE | 6 | 1 |
| F200 | FAN FUSES | 5 | 1 |

LEGEND

MASTER

| ITEM | DESCRIPTION | SHEET | Q.ty |
|-------|------------------------------------|-------|------|
| F12A | PHASE VOLT MONITOR | 6 | 1 |
| F130A | PHASE VOLT MONITOR FUSE | 6 | 1 |
| FC1 | POWER FACTOR COMPRESSOR FUSES 1 | 3 | 1 |
| FC2 | POWER FACTOR COMPRESSOR FUSES 2 | 3 | 1 |
| K1 | AUXILIARY RELAY | 9 | 1 |
| K3 | AUXILIARY RELAY | 11 | 1 |
| K6 | AUXILIARY RELAY | 10 | 1 |
| K26 | AUXILIARY RELAY | 12 | 1 |
| KM2 | COMPRESSOR CONTACTORS | 9 | 1 |
| KM4 | COMPRESSOR CONTACTORS | 11 | 1 |
| KM10 | POWER FACTOR CORRECTION CONTACTORS | 9 | 1 |
| KM11 | FAN MOTOR CONTACTOR | 10 | 1 |
| KM12 | FAN MOTOR CONTACTOR | 10 | 1 |
| KM13 | FAN MOTOR CONTACTOR | 10 | 1 |
| KM14 | FAN MOTOR CONTACTOR | 10 | 1 |
| KM20 | POWER FACTOR CORRECTION CONTACTORS | 11 | 1 |
| KM21 | FAN MOTOR CONTACTOR | 12 | 1 |
| KM22 | FAN MOTOR CONTACTOR | 12 | 1 |
| KM23 | FAN MOTOR CONTACTOR | 12 | 1 |
| KM24 | FAN MOTOR CONTACTOR | 12 | 1 |
| KM51 | PRIMARY PUMP CONTACTOR | 13 | 1 |
| KM55 | COMPRESSOR CONTACTORS | 9 | 1 |
| KM61 | SECONDARY PUMP CONTACTOR | 13 | 1 |
| KM65 | COMPRESSOR CONTACTORS | 11 | 1 |
| KT1 | TIME DELAY RELAY | 9 | 1 |
| KT2 | TIME DELAY RELAY | 11 | 1 |
| M1 | COMPRESSOR 1 | 2 | 1 |
| M2 | COMPRESSOR 2 | 2 | 1 |
| M11 | FAN MOTOR | 4 | 1 |
| M12 | FAN MOTOR | 4 | 1 |
| M13 | FAN MOTOR | 4 | 1 |
| M14 | FAN MOTOR | 4 | 1 |
| M21 | FAN MOTOR | 5 | 1 |
| M22 | FAN MOTOR | 5 | 1 |
| M23 | FAN MOTOR | 5 | 1 |
| M24 | FAN MOTOR | 5 | 1 |
| MP1 | MOTOR THERMAL PROTECTION 1 | 2 | 1 |
| MP2 | MOTOR THERMAL PROTECTION 2 | 2 | 1 |
| P1 | PUMP 1 | 3 | 1 |
| P2 | PUMP 2 | 3 | 1 |
| Q0 | ON-OFF UNIT SWITCH | 8 | 1 |
| Q1 | ON-OFF COMPRESSOR SWITCH | 8 | 1 |
| Q2 | ON-OFF COMPRESSOR SWITCH | 8 | 1 |

DAIKIN EUROPE NV

DESCRIPTION:

LEGEND

REFEREMENT:

MASTER

N°: 180245

REVISIONE / REVISIONS: 6

SHEETS: 26 | PAG.: 24

| ITEM | DESCRIPTION | SHEET | Q.ty |
|------|---------------------------------|-------|------|
| Y13 | UNLOADER SOLENOID VALVE CIRC. 1 | 9 | 1 |
| Y18 | 4 WAY VALVE COMP.1 | 15 | 1 |
| Y22 | LOADER SOLENOID VALVE CIRC.2 | 11 | 1 |
| Y23 | UNLOADER SOLENOID VALVE CIRC. 2 | 11 | 1 |
| Y28 | 4 WAY VALVE COMP.2 | 15 | 1 |

1 | 2 | 3 | 4 | 5 | 6 | 7 | 8 | 9 | 10 | 11 | 12 | 13 | 14 | 15 | 16 | 17 | 18 | 19 | 20

| Standard compressor | | | |
|---------------------|-------|-------|-------|
| FUSES + OVERCURRENT | 3118 | 3120 | 3121 |
| F1 | 100 A | 100 A | 125 A |
| F2 | 100 A | 100 A | 125 A |
| F51 | 49 A | 49 A | 65 A |
| F52 | 49 A | 49 A | 65 A |

| Standard fan | | | |
|---------------------|-------|-----------------|----------------|
| | | FANS-TEC 0700 | FANS-TEC 0700 |
| FUSES + OVERCURRENT | | 6P (HIGH SPEED) | 8P (LOW SPEED) |
| F100 | 20 A | | 20 A |
| F200 | 20 A | | 20 A |
| Q15+22 | 2.7 A | | 1.6 A |
| Q25+32 | 2.7 A | | 1.6 A |

 OPTIONAL EQUIPMENT

 EQUIPMENT INSTALLED

----- FIELD WIRING CONNECTIONS

----- REMOVE THIS EQUIPMENT WITH KIT SPEEDTROL

 ELECTRICAL EQUIPMENT INSTALLED ON COMPRESSOR TERMINALS BOX

(A) HIGH SPEED FAN CONNECTIONS
ST - LN - HA VERSION
A - H - N VERSION

(B) LOW SPEED FAN CONNECTIONS
XN VERSION

(1) INSTALL WITH EXPANSION BOARD ONLY

(2) INSTALL WITH SECONDARY PUMP ONLY

(3) INSTALL WITH "LOW PRESSURE SWITCH" ONLY

(4) INSTALL WITH "COMP. ALARM KIT" ONLY

(5) INSTALL WITH "HEAT RECOVERY KIT"

(6) INSTALL WITH "SPN76"

(7) FIRST PUMP ALARM

(8) SECONDARY PUMP ALARM

(*) REMOVE THIS WIRE OR MJ IF THE OPTION IS REQUESTED
 MANUAL RESET

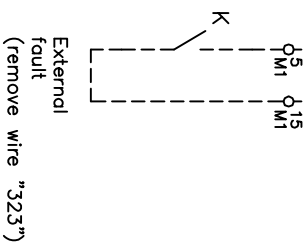
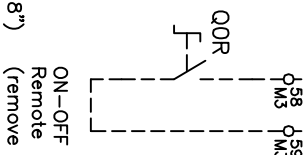
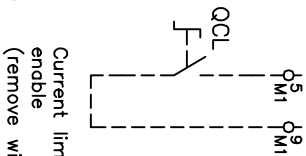
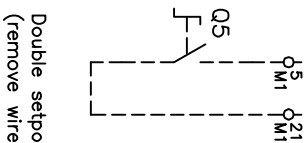
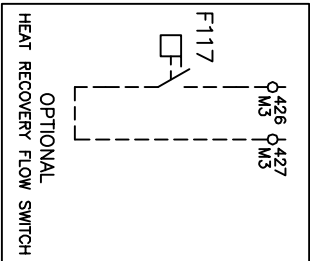
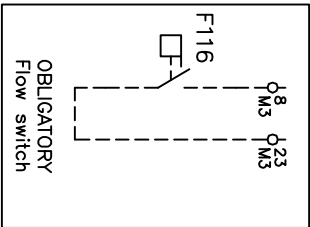
| Standard pumps | | | | | |
|---------------------|--------|--------|-------|-------|--------|
| FUSES + OVERCURRENT | 1,5 kW | 2,2 kW | 3 kW | 4 kW | 5,5 kW |
| F9 | 16 A | 20 A | 25 A | 35 A | 35 A |
| F9A | 16 A | 20 A | 25 A | 35 A | 35 A |
| F70 | 3,5 A | 5 A | 6,5 A | 8,5 A | 11,5 A |
| F80 | 3,5 A | 5 A | 6,5 A | 8,5 A | 11,5 A |

LIST OF OPTIONS

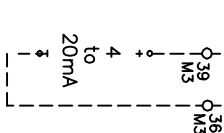
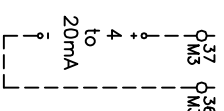
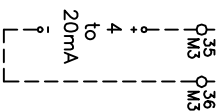
| Option | Description |
|--------|-------------------------|
| OPBT | Buffer tank |
| OPLA | Low Ambient |
| OPPF | Power Factor Correction |
| OPSC | Single Contact |
| OPSP | Single Pump |
| OPTP | Twin Pump or Dual Pump |
| OPTR | Total Recovery |
| OP57 | A/V Meter |
| SPN11 | Thermal Relay |
| SPN15a | Variable Phase monitor |
| SPN19 | Current limit |
| SPN76 | OAT Sensor |
| SPN79 | External Fault Alarm |
| SPN95 | Forced Ventilation |
| SPN96 | Anticondensate Heater |

1 | 2 | 3 | 4 | 5 | 6 | 7 | 8 | 9 | 10 | 11 | 12 | 13 | 14 | 15 | 16 | 17 | 18 | 19 | 20

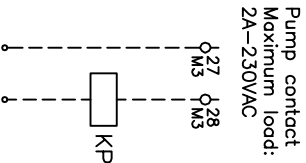
Digital input terminals



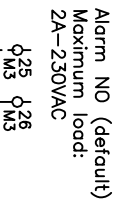
Analog input terminals



Digital output terminals



External
power supply
(ex 24VAC or 230VAC)



External
power supply
(ex 24VAC or 230VAC)

1 | 2 | 3 | 4 | 5 | 6 | 7 | 8 | 9 | 10 | 11 | 12 | 13 | 14 | 15 | 16 | 17 | 18 | 19 | 20