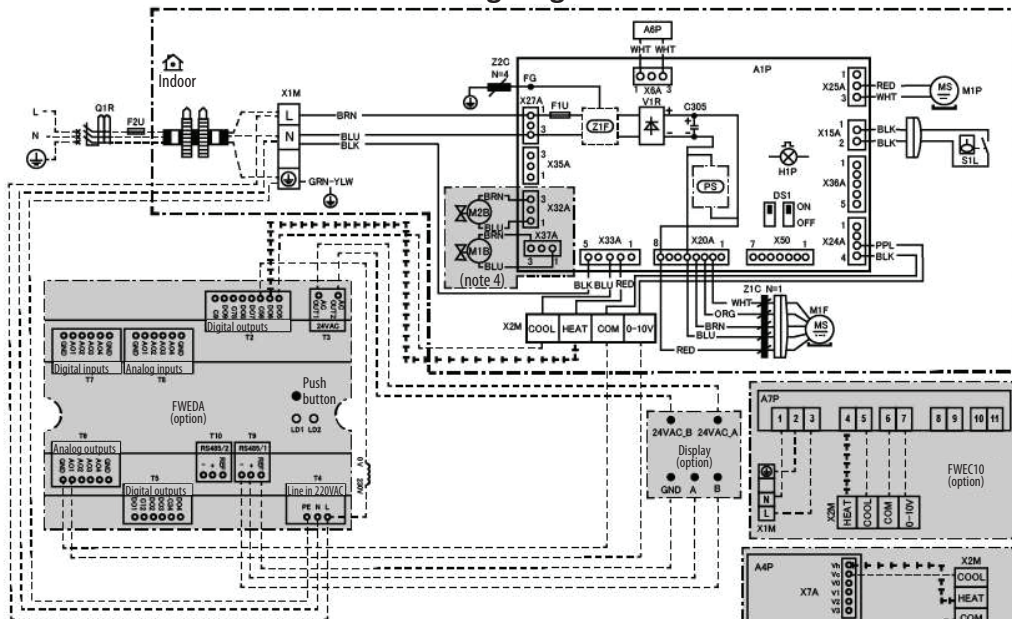
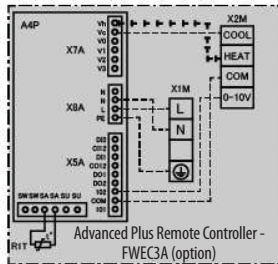
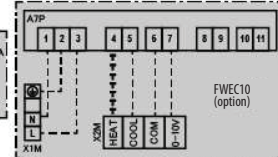
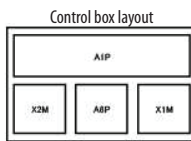


Wiring diagram



Wire colours	
BLK	Black
RED	Red
WHT	White
YLW	Yellow
GRN	Green
ORG	Orange
BRN	Brown
BLU	Blue
PPL	Purple

- NOTES**
- : 2 pipe, 4 pipe
 - : 4 pipe only
 - : terminal block, ○ : connector, ⊞ : field wiring
 - Refer to installation manual for power requirement.
 - Please follow the manual of the external remote controller for the wiring of the remote controller.
 - X32A and X37A can only be connected to the specified Daikin valve options.
 - EKER - A kit should be used when another valve outside the option list is used.



Indoor unit		Terminal connections	
A1P	Main PCB	X1M	Terminal strip (power supply)
A2P	Electronic board (FWEC5AP)	X2M	Terminal strip (R/C signal and valve terminal & fan modulating)
A3P	Electronic control (FWEC5AC)	Z1F	Noise filter
A4P	Advanced Plus Remote Controller (FWEC3A)	Z1C	Ferrite core
A5P	Adaptor PCB (Panel connection)	Z2C	Ferrite core
A6P	Reactor (Inside of el. compo. assy)	PS	Switching power supply
A7P	Remote controller (FWEC10)	M1B	Heating actuator (four pipe only)
C305	Capacitor	M2B	Cooling actuator
FG	Frame ground	PCB connections	
F1U	Fuse (6.3A, 250V)	X5A	Reactor
F2U	Field fuse	X15A	Float switch
DS1	Dip switch on PCB	X20A	BLDC motor
H1P	Flashing lamp	X24A	Fan modulating
L1	CM Choke (cool)	X25A	Drain pump
L2	Inductor	X27A	Power supply
M1P	Motor (drain pump)	X32A	Cooling valve
M1S	Motor (drain pump)	X33A	R/C signal and valve
M2S	Motor (drain pump)	X35A	Electrical heater
M3S	Swing motor	X36A	Stepping motor (dec. panel)
M4S	Swing motor	X37A	Heating valve
M5S	Swing motor	X50A	Serial communicator
M1F	Motor (DC Fan)	Terminal connections	
S1L	Float switch	0-10V	0-10V DC Fan modulating
V1R	Diode bridge	COM	Common
Q1R	Earth leakage breaker	HEAT	Heating signal
		COOL	Cooling signal

Electronic board (FWEDA)		Connector for optional parts	
C56	D05/D06 Common	T2	Connector (wiring valve wires)
D05	Cooling valve	T3	Connector (power supply for display)
D06	Heating valve	T4	Connector (power supply for Modbus)
AC OUT1	24 Vac Line	T6	Connector (fan modulating wires)
AC OUT2	24 Vac Line	T9	Connector (Modbus)
L	Phase	X5A	Connector (fan modulating wires)
N	Neutral	X7A	Connector (wiring valve wires)
PE	Ground	X8A	Connector (power supply for display)
+	Modbus positive	Display (SHINKA TOUCHWA) or (SHINKATOUCHBA)	
-	Modbus Negative	A	Possible
REF	Reference	B	Negative
A01	Fan modulation (0-10V)	OND	Grounding (reference)
GND	A01/A02 Common	24VAC_A	24 VAC line
		24VAC_B	24 VAC line