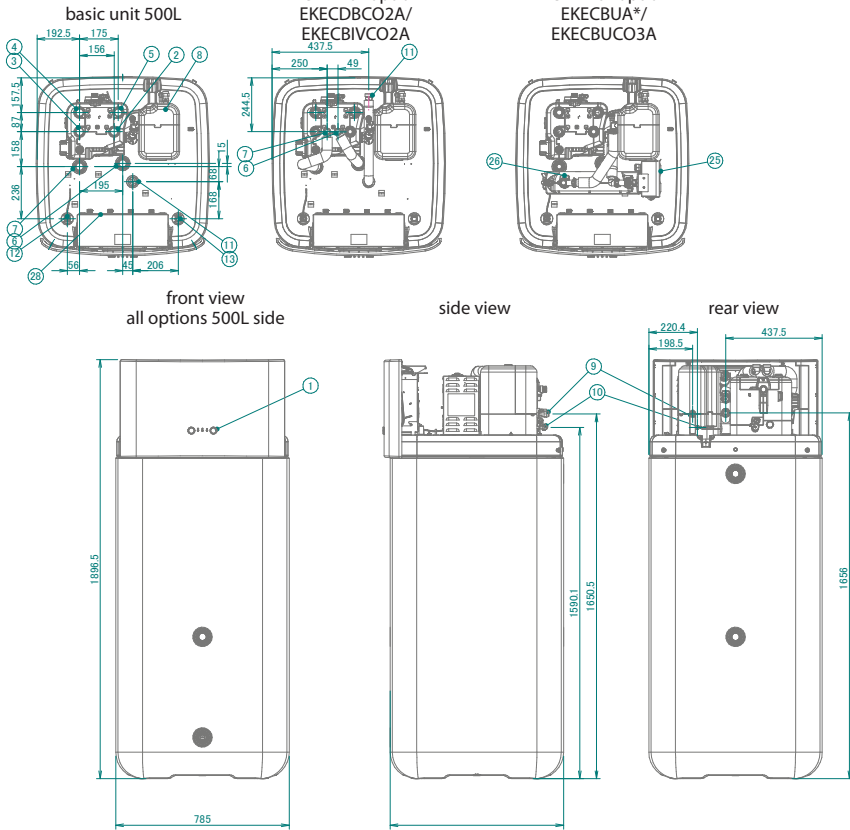
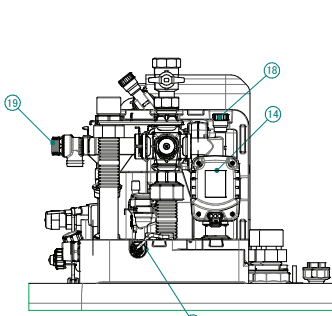
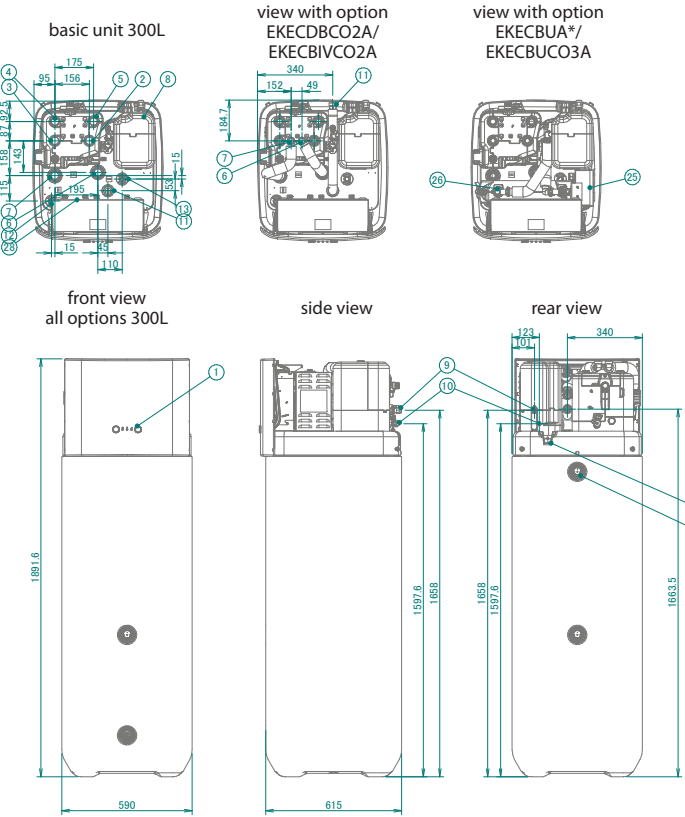
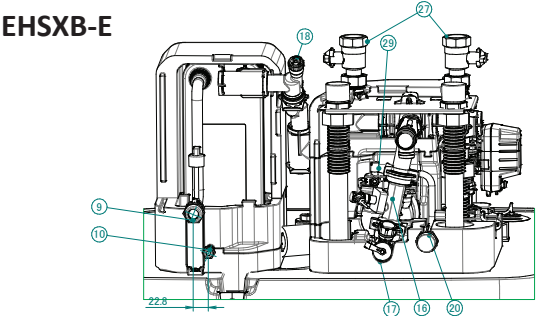


EHSX-E  
EHSXB-E



The typical field installation has to be done according to the applicable legislation.  
For example, refer to the installer reference guide.

|    |   |
|----|---|
| 1  | User interface  |
| 2  | Space heating/cooling water in (screw connection, 1")       |
| 3  | Space heating/cooling water out (screw connection, 1")      |
| 4  | Domestic hot water: cold water in (screw connection, 1")    |
| 5  | Domestic hot water: hot water out (screw connection, 1")    |
| 6  | BIV water: hot water in (screw connection, 1")              |
| 7  | BIV water: cold water out (screw connection, 1")            |
| 8  | Plate heat exchanger  |
| 9  | Refrigerant gas pipe connection (flare connection, 5/8")    |
| 10 | Refrigerant liquid pipe connection (flare connection, 1/4") |
| 11 | Drain-back connection (screw connection, 1")                |
| 12 | Tank temperature sensor                                     |
| 13 | Level indicator   |
| 14 | Tank valve  |
| 15 | Bypass valve  |

|    |   |
|----|---|
| 16 | Flow sensor   |
| 17 | Fill and drain valve water circuit                    |
| 18 | Manual air purge                                      |
| 19 | Safety valve  |
| 20 | Expansions vessel connection (screw connection, 3/4") |
| 21 | Space heating water pessure sensor                    |
| 22 | Pump  |
| 23 | Drain pan   |
| 24 | Spillover connection                                  |
| 25 | Switch box backup heater                              |
| 26 | Backup heater   |
| 27 | Shut-off valves                                       |
| 28 | Main switch box                                       |
| 29 | Automatic air purge                                   |