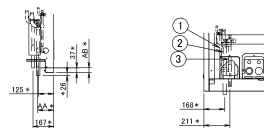


front side



Bottom side

Notes

- For piping connection method (front and bottom sides) see the installation manual.
- Field piping connections:
 - High pressure/low pressure gas side
 - EMRQ8A*: ϕ 15.9 Brazing connection
 - EMRQ10-12A*: ϕ 19.1 Brazing connection
 - EMRQ14-16A*: ϕ 22.2 Brazing connection
 - Suction gas pipe
 - EMRQ8A*: ϕ 19.1 Brazing connection
 - EMRQ10A*: ϕ 22.2 Brazing connection
 - EMRQ12-16A*: ϕ 28.6 Brazing connection
 - Liquid pipe
 - EMRQ8-10A*: ϕ 9.5 Brazing connection
 - EMRQ12-16A*: ϕ 12.7 Brazing connection
- To meet the field piping diameter requirements, use the accessory piping from the accessory bag.
- * The dimensions shown are after the connection of the accessory piping.

No.	Part name	Remark
1	Liquid stop valve	See note 2
2	Gas stop valve (Suction)	See note 2
3	Gas stop valve (High pressure/Low pressure)	See note 2
4	Ground terminal	Inside of switchbox (M8)
5	Power cord routing hole (side)	ϕ 62
6	Power cord routing hole (front)	ϕ 45
7	Power cord routing hole (front)	ϕ 27
8	Power cord routing hole (bottom)	ϕ 50
9	Wire routing hole (front)	ϕ 27
10	Pipe routing hole (front)	See note 1
11	Pipe routing hole (bottom)	See note 1

Item	AA	AB
EMRQ8-12A	129	32
EMRQ14-16A	131	38