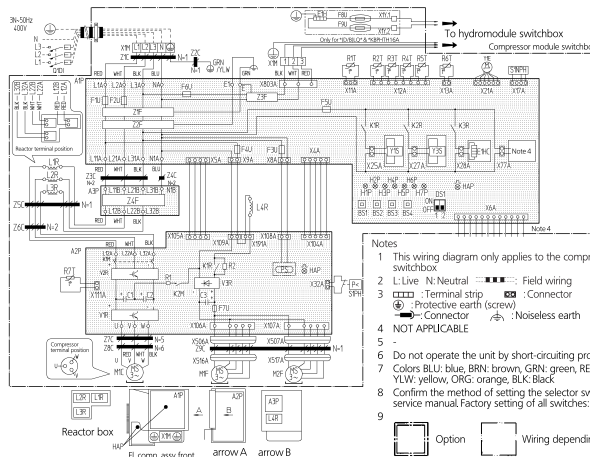


EBHQ11-016BB6W1

Power supply unit



A1P	Printed circuit board
A2P	Printed circuit board (INV)
A3P	Printed circuit board (Noise filter)
B51-B54	Push button switch
C1-C4	Capacitor
DS1	DPF switch
E1HC	Crankcase heater
E1H	Bottomplate heater
F1U	Fuse (31.5A/250V)
F2U	Fuse (31.5A/250V)
F3U	Fuse (T 6.3A/250V)
F4U	Fuse (T 6.3A/250V)
F5U	Fuse (T 6.3A/250V)
F6U	Fuse (T 6.3A/250V)
F7U	Fuse (T 5.0A/250V)
F8U-F9U	Fuse (F 1.0A/250V)
HAP (A1P)	Pilot lamp (Service monitor-green)
HAP (A2P)	Pilot lamp (Service monitor-green)
H1P-7P (A1P)	Pilot lamp (Service monitor-orange)
K1M-K2M	Magnetic contactor
K1UA (1P)	Magnetic relay (Y15)
K1R (A2P)	Magnetic relay (Y25)
K2R (A1P)	Magnetic relay (Y25)
K3R (A1P)	Magnetic relay (E1HC)
L1R-L3R	Reactor
L4R	Reactor (For outdoor fan motor)
M1C	Motor (Compressor)
M1F	Motor (Fan) (upper)
M2F	Motor (Fan) (lower)
PS	Switching power supply
R1-R4	Resistor
R1T	Thermistor (Air)
R2T	Thermistor (Discharge)
R3T	Thermistor (Suction)
R4T	Thermistor (Heat exchanger)
R5T	Thermistor (heat exchanger middle)
R6T	Thermistor (Liquid)
R7T	Thermistor (Fin)
S1NPH	Pressure sensor
S1PH	Pressure switch (high)
V1R-V2R	Power module
V3R	Diode module
X1M	Terminal strip
Y1E	Electronic expansion valve
Y1S	Solenoid valve (4 way valve)
Y3S	Solenoid valve
Z1C-Z9C	Noise filter
Z1C-Z4F	Noise filter
Q1DI	Earth leakage circuit breaker
Optional connector	
X6A	Connector
X77A	Connector
X1Y	Connector