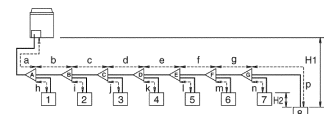


System piping limitations

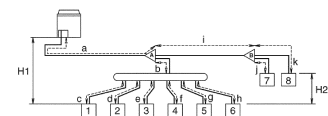
Piping length restrictions

Make sure to perform the piping installation within the range of the maximum allowable pipe length, allowable level difference and allowable length after branching as indicated below:

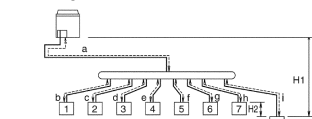
Example 1: Branch with refnet joint



Example 2: Branch with refnet joint and refnet header



Example 3: Branch with refnet header



Maximum allowable lengths

Actual pipe length between outdoor and indoor unit $\leq 100\text{m}$

Example 1: $a+b+c+d+e+f+g+p \leq 100\text{m}$

Example 2: $a+i+k \leq 100\text{m}$

Example 3: $a+i \leq 100\text{m}$

Equivalent piping length between indoor and outdoor units $\leq 120\text{m}$ (equivalent pipe length of refnet to be taken 0.5m and for header 1.0m)

Total piping length from outdoor to all indoor units $\leq 300\text{m}$

Pipe length from first branch kit (either refnet joint or refnet header) to indoor unit $\leq 40\text{m}$

[Example 1]: Unit 8: $b+c+d+e+f+g+p \leq 40\text{m}$

[Example 2]: Unit 6: $b+h \leq 40\text{m}$, Unit 8: $i+k \leq 40\text{m}$

[Example 3]: Unit 8: $i \leq 40\text{m}$


Maximum allowable height difference

Difference in height between outdoor and indoor units $H1 \leq 40\text{m}$.

Difference in height between lowest and highest indoor unit $H2 \leq 15\text{m}$.

If setting [A-01] (this is an indoor unit setting) is changed, maximum H2 difference can be increased to 25m. Refer to field settings in the indoor unit installation manual for more information.

This setting cannot be used for EKHBRD units. Maximum H2 difference for EKHBRD units is limited to 15m.

Note  When the equivalent pipe length between outdoor and indoor units is 90 m or more, the size of the main liquid pipe must be increased. Never increase suction gas pipe and discharge gas pipe sizes.

Depending on the length of the piping, the capacity may drop, but even in such a case it is possible to increase the size of the main liquid pipe.

HP	Liquid ϕ (mm)
8+10	9.5 \rightarrow 12.7
12-16	12.7 \rightarrow 15.9

Make sure to perform the piping installation within the range of the maximum allowable pipe length, allowable level difference and allowable length after branching as indicated above.