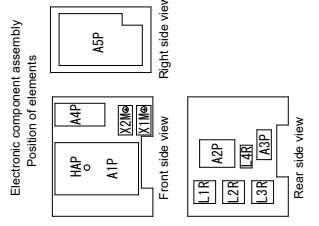


A1P	Printed circuit board (main)
A2P	Printed circuit board (noise filter)
A3P	Printed circuit board (leakage current)
A4P	Printed circuit board (ACS)
ASP	Push-button board (inverter)
BS1 ~ BS4 (A1P)	Push-button switch
C1 ~ C3 (ASP)	Capacitor
DS1 (A1P)	DIP switch
E1H	Drain tube heater (field supply)
ETHHEX	PHE heaters
FTU	Field fuse (field supply)
FU	Fuse
FU1 ~ FU7 (A1P, ASP)	Light-emitting diode (service monitor is orange)
H1P ~ H7P (A1P)	Light-emitting diode (service monitor is green)
K1R (A1P)	Magnetic relay (Y1S)
K1R (ASP)	Magnetic relay (Y1S)
K1R (A4P)	Magnetic relay (ETHHEX)
K2R (A1P)	Magnetic relay (Y2S)
K2R (A4P)	Magnetic relay (Y2S)
K3R (A1P)	Magnetic relay (Y3S)
K3R (A4P)	Magnetic relay (Y3S)
K2M, K11M (ASP)	Magnetic contactor
L1R ~ L4R	Reactor
M1C	Motor (compressor)
M1F	Motor (fan)
PS (ASP)	Switching power supply
Q1D1	Earth leakage circuit breaker (30mA)(field supply)
R1, R2 (ASP)	Resistor
R1T	Thermistor (ambient)
R2T	Thermistor (discharge)
R3T	Thermistor (suction)
R4T	Thermistor (heat exchanger distributor)
R5T	Thermistor (heat exchanger middle)
R6T	Thermistor (refrigerant liquid)
R7T	Thermistor (compressor)
R8T	Thermistor (port)
R9T	Thermistor (inlet water)
R10T	Thermistor (outlet water)
R11T	Thermistor (fin)
S1NPH	High pressure sensor
S1PH, S2PH	High pressure switch
S1PL	Low pressure switch
T1A	Current transfo
V1R, V2R (ASP)	IGBT power module
X1M~X2M	Diode module
Y1E	Terminal strip
Y2E	Electronic expansion valve (main)
Y3E	Electronic expansion valve (injection)
Y4S	Solenoid valve (4-way valve)
Y5S	Solenoid valve (low pressure bypass)
Y6S	Solenoid valve (hot gas bypass)
Y4S	Solenoid valve (liquid injection)
Z10C	Noise filter (ferrite core)
Z1F ~ Z4F (A1P, A2P)	Noise filter



- Colours: blk:black; red:red; blu:blue; wht:white; grn:green; ylw:yellow; pnk:pink; org:orange; gry:grey; brn:brown
- This wiring diagram applies only to the outdoor unit.
- When operating, do not short-circuit protection device S1PH, S2PH and S1PL.
- Refer to the combination table and the option manual for how to connect the wiring to X6A, X41A and X2M.
- The factory setting of all switches is OFF, do not change the setting of the selector switch (DS1).
- Ferrite core Z8C consists out of 2 separate core parts.

