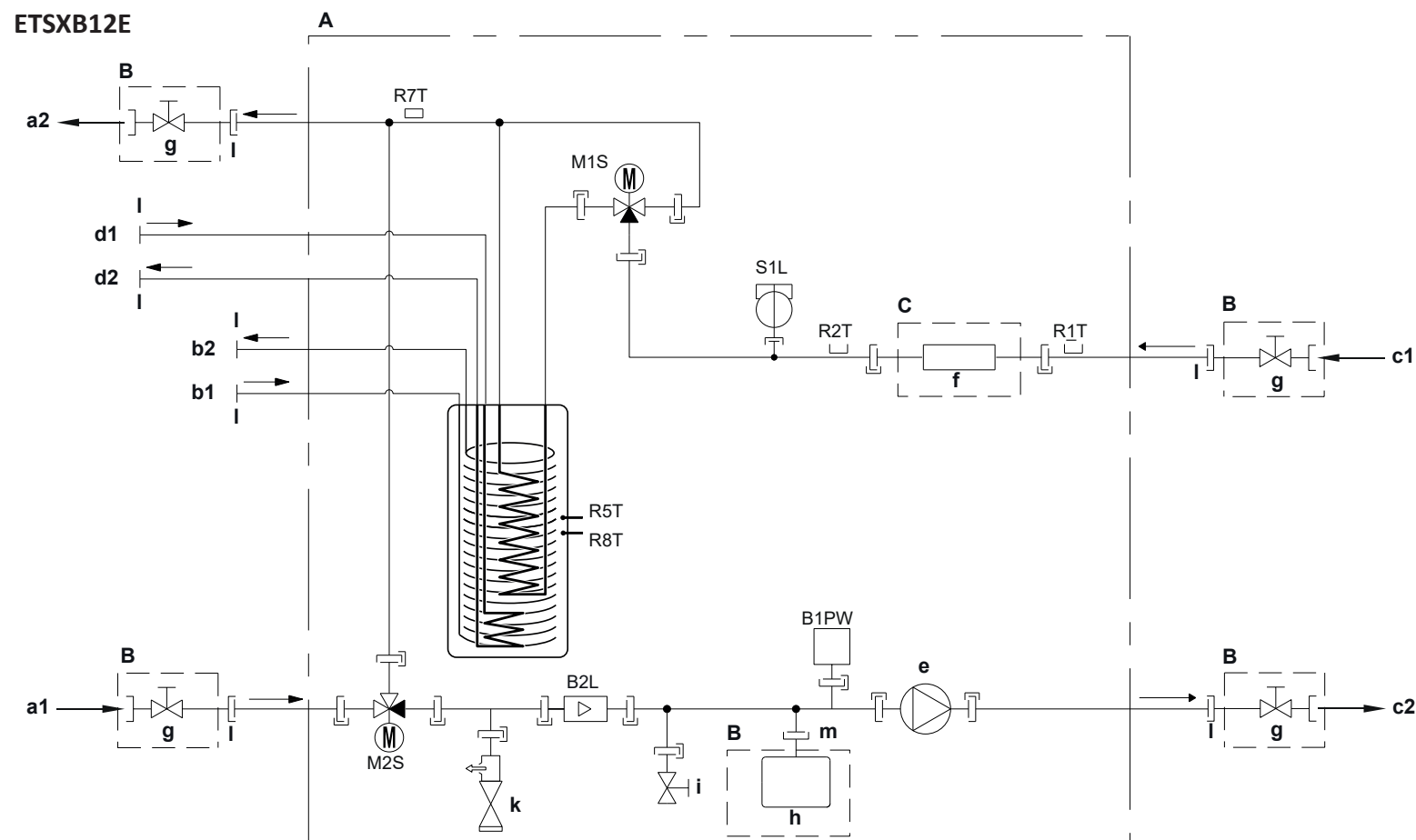


ETSH12E Piping diagram: indoor unit

ETSHB12E

ETSX12E

ETSXB12E



A Indoor unit

B Field installed

C Optional

- a1 Space heating/cooling - Water IN (screw connection, 1")
- a2 Space heating/cooling - Water OUT (screw connection, 1")
- b1 DHW - Cold Water IN (screw connection, 1")
- b2 DHW - Hot water OUT (screw connection, 1")
- c1 Water IN from outdoor unit (screw connection, 1")
- c2 Water OUT to outdoor unit (screw connection, 1")
- d1 Water IN from bivalent heat source (screw connection, 1")
- d2 Water OUT to bivalent heat source (screw connection, 1")

e Pump

f Backup heater

g Shut-off valve, female-female 1"

h Expansion vessel

i Drain valve

k Safety valve

l External thread 1"

m External thread 3/4"

B2L Flow sensor

B1PW Space heating water pressure sensor

M1S Tank valve

M2S Bypass valve

R1T Thermistor (water IN)

R2T Thermistor (backup heater - water OUT)

R5T, R8T Thermistor (tank)

R7T Thermistor (tank - water OUT)

S1L Flow switch

—|— Screw connection

—>> Flare connection

—|— Quick coupling

—●— Brazed connection