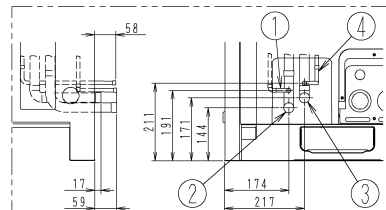
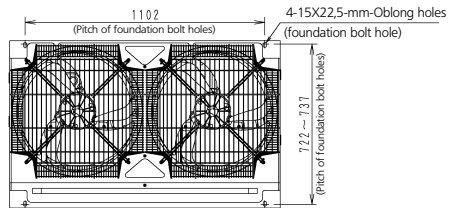
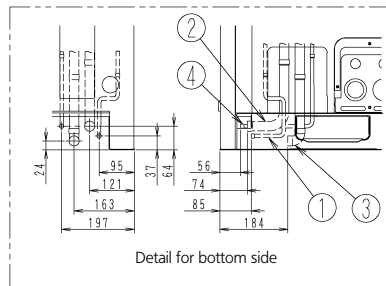
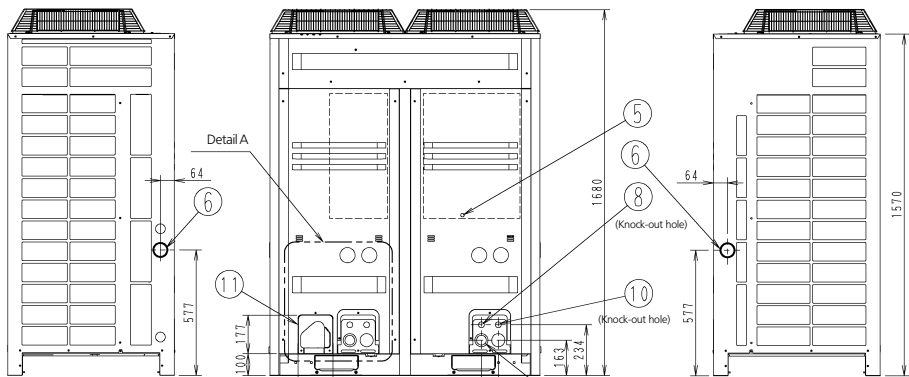


# LRYEQ16AY1



Detail for front side



Detail for bottom side

- 1 Liquid (For air conditioner)  $\phi$ 9.5 Brazed connection
- 2 Gas (For air conditioner)  $\phi$ 25.4 Brazed connection
- 3 Gas (For refrigeration)  $\phi$ 25.4 Brazed connection
- 4 Liquid (For refrigeration)  $\phi$ 9.5 Brazed connection
- 5 Grounding terminal inside of switch box(M8)
- 6 Power cord routing hole (side)  $\phi$ 62
- 7 Power cord routing hole (front)  $\phi$ 45
- 8 Power cord routing hole (front)  $\phi$ 27
- 9 Power cord routing hole (bottom)  $\phi$ 50
- 10 Wire routing hole (front)  $\phi$ 27
- 11 Pipe routing hole (front)
- 12 Pipe routing hole (bottom)

