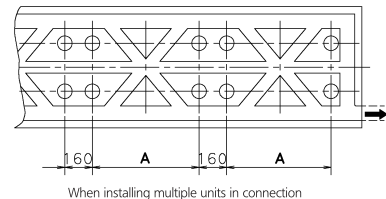
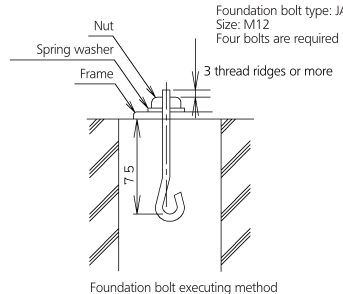


## NOTES

- 1 The proportions of cement and gravel for the concrete shall be 1:2:4, and the reinforcement bars that their diameter are 10mm, (approx. 300mm intervals) shall be placed.
- 2 The surface shall be finished with mortar. The corner edges shall be chamfered.
- 3 When the foundation is built on a concrete floor, rubble is not necessary. However, the surface of the section on which the foundation is built shall have rough finish.
- 4 A drain ditch shall be made around the foundation to thoroughly drain water from the equipment installation area.
- 5 When installing the equipment on a roof, the floor strength shall be checked, and water-proofing measures shall be taken.
- 6 Y ditch is not necessary for 5HP models.



Model	A	B
RXY05MY1B RXY3MY1, YL TL RXSMY1 RXY05MAY1, YL TL RXY05PY1(BF)	497	697
RXY8-10MY1B RXQ8-10MY1B RXY8-10MAY1, YL TL RXB-10MY1 RXYQ8-10MAY1, YL TL RHXY8-10MY1 RXYQ8-10MAY1 RCXQ8-10MAY1 RXYQ8-10PY1 RZP250MAY1	792	992
RXYQ12-14-16MY1B REYQ12-14-16MY1B RXYQ12-14-16MY1, YL TL RX12-14-16MY1 RXYQ12-14-16MAY1, YL TL RHXYQ12-14-16MY1 RHXYQ12-14-16MAY1 RCXYQ12-14-16MY1K RXYQ8-10MY1K RXYQ12-14-16-18PY1 RZP350MAY1	1102	1302