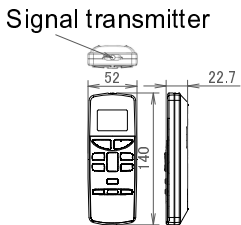
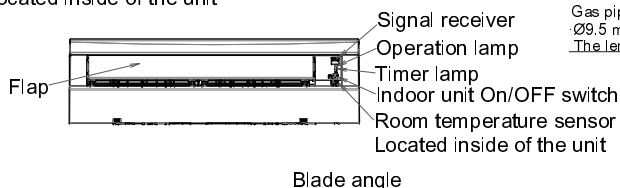
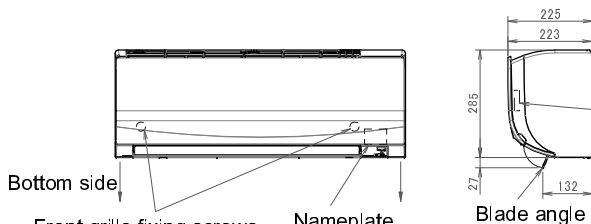
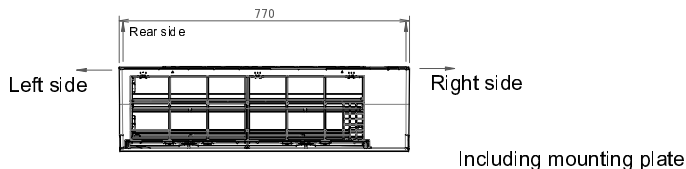


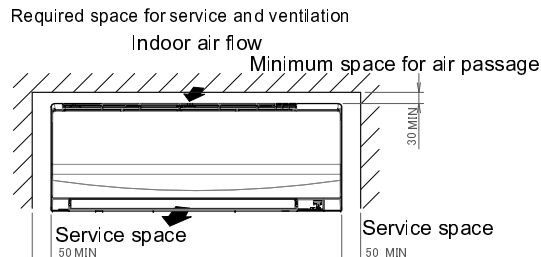
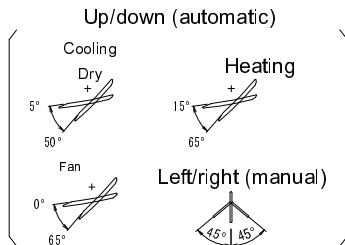
ATXF-C CTXF-C

The → mark shows the piping direction.

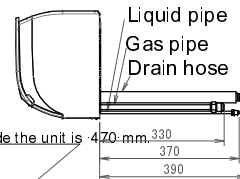


Wireless remote control

(ARC470A1)



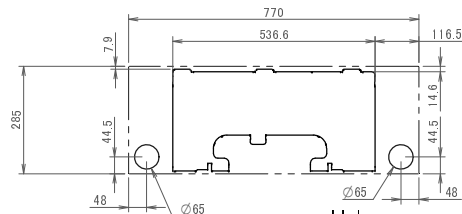
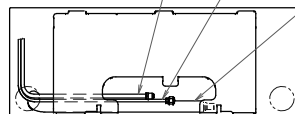
Terminal block with earth terminal
Located inside of the unit



Drain hose
Inside diameter: ϕ 14 mm
Outside diameter: ϕ 16 mm
Connecting part

Liquid pipe
 ϕ 6.4 mm: CuT
The length of the pipe outside the unit is ϕ 410 mm.

Gas pipe
 ϕ 9.5 mm: CuT
The length of the pipe outside the unit is ϕ 360 mm.



Hole for embedded piping

Hole

Standard location of holes in the wall

3D113368