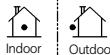
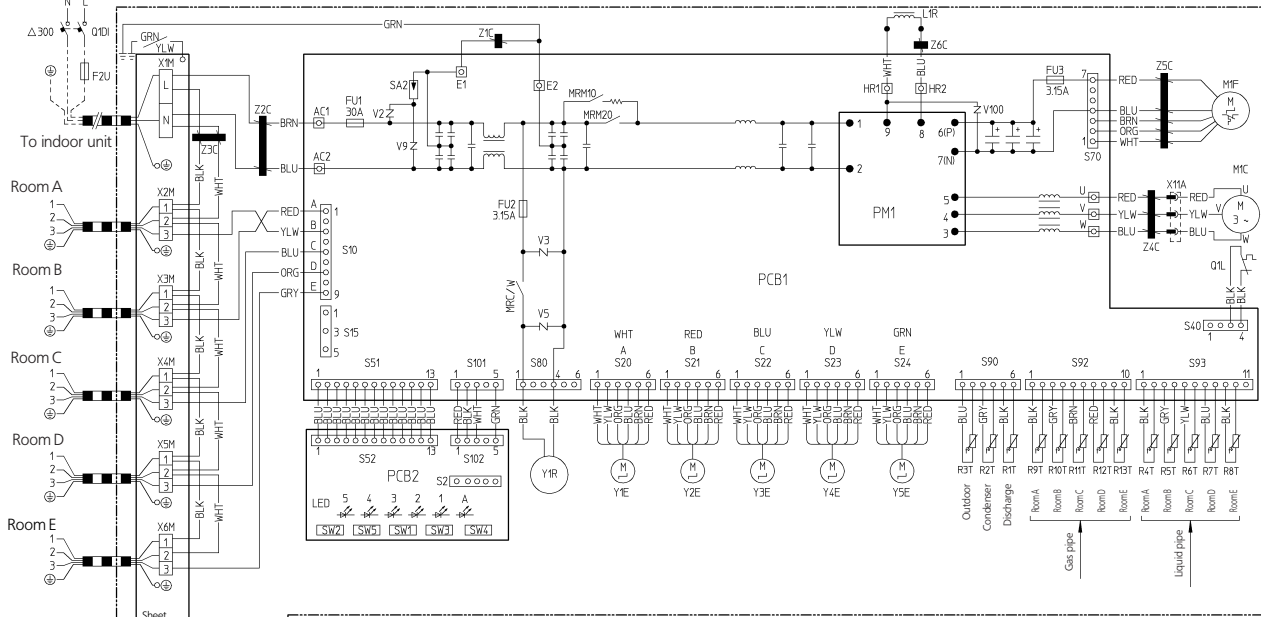


5MXS90E

N ~ 50Hz
230V

BLK: Black
BRN: brown
WHT: White
RED: Red
BLU: Blue
GRY: Grey
ORG: Orange
YLW: Yellow
GRN: Green



L: Live, N: Neutral, Field wiring
 : Terminal strip : Connector : Connection
 : Protective earth (screw) : Relay connector
 : Terminal

Z1C-Z6C	: Ferrite core	R1T-R3T	: Thermistor	Q1L	: Overload protector
X1M-X6M	: Terminal strip	R4T-R8T	: Connector	PM	: Power module
Y1E-Y5E	: Electronic expansion valve coil	R9T-R13T		PCB1,2	: Printed circuit board
V2V3/V5		S2-S102		Y1R	: Four way valve coil
V9/V100	: Varistor	LED1-LED5		Sheet metal	: Terminal strip fixed plate
SA2	: Surge arrester	LEDA	: Light emitting diode	F2U	: Field fuse
FU1, FU2, FU3	: Fuse	SW1	: Forced operation on/off switch (SW1)	Q1D	: Field earth leakage breaker (300mA)
AC1, AC2		SW2	: Operation mode select SW (SW2)		
U,V,W,X11A		SW3	: Wiring error check SW (SW3)		
E1,E2E		SW4	: Priority room setting SW (SW4)		
HR1,HR2		SW5	: Night quiet mode setting SW (SW5)		
H1, H2, L1, L2	: Connector	M1C	: Compressor motor		
M1R10, M1R20	: Magnetic relay	M1F	: Fan motor		
M1R/W		L1R	: Reactor		