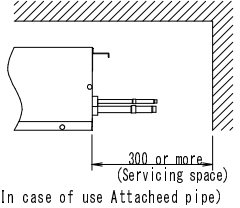
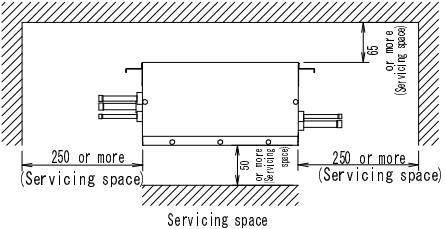
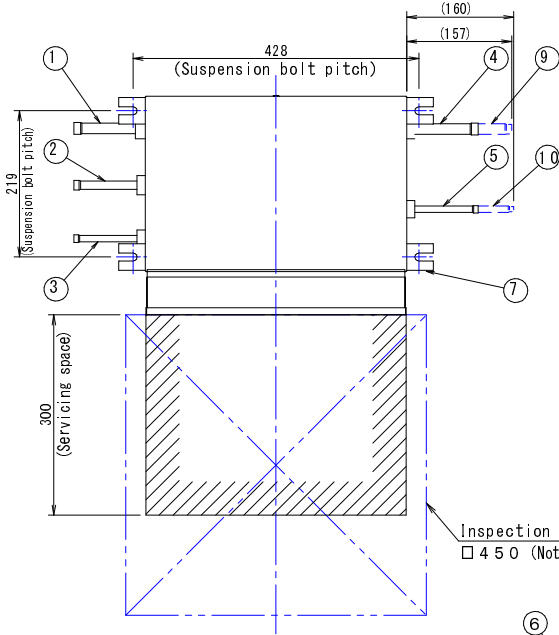
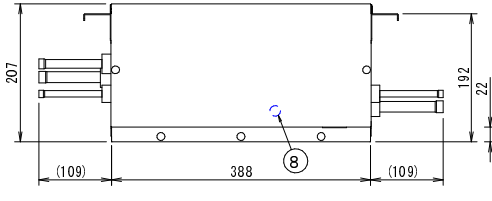
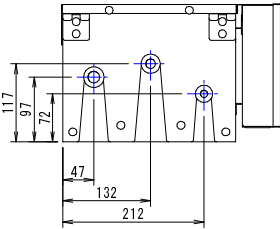


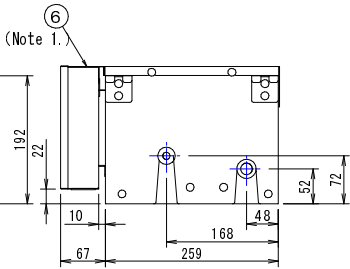
BS1Q10A



- Notes)
1. Electric box can also be fixed on the other side of the unit.
 2. Be sure to install an inspection door at electric box side.
 3. Attached pipe is only used in case of connecting with a 20~50 class indoor unit,
 4. Small sound of refrigerant will be made, which may be disturbing.
Do not install it at the place such as bedroom under roof.



Location of unit's Name Plate... Right side of electric box



Number	Part name	Description
10	Attached pipe(2) (Note 3)	φ 6.4mm brazing connection
9	Attached pipe(1) (Note 3)	φ 12.7mm brazing connection
8	Grounding terminal	M 4
7	Suspension brackets	M 8 ~ M 10
6	Electric box (Note 1.)	
5	Liquid pipe connection port	φ 9.5mm brazing connection
4	Gas pipe connection port	φ 15.9mm brazing connection
3	Liquid pipe connection port	φ 9.5mm brazing connection
2	HP/LP gas pipe connection port	φ 12.7mm brazing connection
1	Suction gas pipe connection port	φ 15.9mm brazing connection