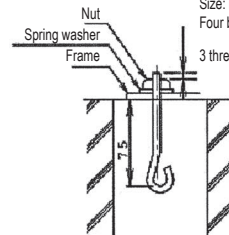
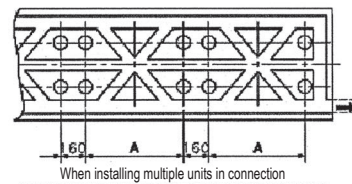


Foundation bolt type: JA  
Size: M12  
Four bolts are required  
3 thread ridges or more



Foundation bolt executing method



Nr	A	B
RXYQ8P7Y1~LK	792	992
RXYQ10-12P7Y1~LK	1102	1302
RXYHQ12	1102	1302

## NOTES

- 1 The proportions of cement:sand:gravel for the concrete shall be 1:2:4, and the reinforcement bars that their diameter are 10mm, (Approx. 300mm intervals) shall be placed.
- 2 The surface shall be finished with mortar. The corner edges shall be chamfered.
- 3 When the foundation is built on a concrete floor, rubble is not necessary. However, the surface of the section on which the foundation is built shall have rough finish.
- 4 A drain ditch shall be made around the foundation to thoroughly drain water from the equipment installation area.
- 5 When installing the equipment on a roof, the floor strength shall be checked, and water-proofing measures shall be taken.