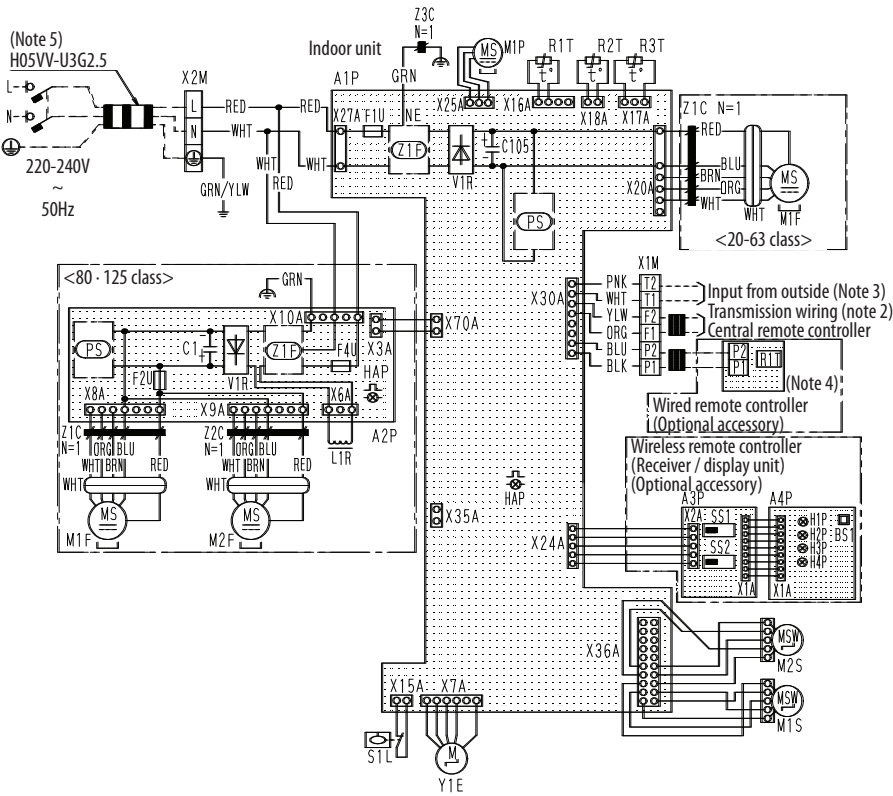


Wiring diagram



NOTES

- : terminal block, □□□: connector, -□□□-: field wiring
- In case using central remote controller, connect it to the unit in accordance with the attached installation manual.
- When connecting the input wiring from outside, forced off or on/off control operation can be selected by the remote controller, see installation manual for more details.
- In case of main/sub overchange, see the installation manual attached to remote controller.
- Shows only in case of protected piping. Use H07RN-F in case of no protection.
- Symbols show as follows:

RED: red, BLK: black, WHT: white, YLW: yellow, GRN: green, ORG: orange, BRN: brown, PNK: pink, BLU: blue.

Indoor unit	
A1P-A2P	Printed circuit board
C105-C1	Capacitor
F1U	Fuse (T, 3.15A, 250V)
F2U	Fuse (T, 5A, 250V)
F4U	Fuse (T, 6.3A, 250V)
HAP	Flashing lamp (A1P, A2P) (service monitor green)
L1R	Reactor
M1F-M2F	Motor (indoor fan)
M1P	Motor (drain pump)
M1S-M2S	Motor (swing blade)
PS	Power supply circuit (A1P, A2P)
R1T	Thermistor (air)
R2T-R3T	Thermistor (coil)
S1L	Float switch
V1R	Diode bridge
X1M-X2M	Terminal block
Y1E	Electronic expansion valve
Z1C	Ferrite core
Z2C	Ferrite core
Z3C	Ferrite core
Z1F	Noise filter (A1P, A2P)
Wireless remote controller (Receiver/display unit)	
A3P-A4P	Printed circuit board
BS1	Push button switch (ON/OFF)
H1P	Pilot lamp (on-red)
H2P	Pilot lamp (timer-green)
H3P	Pilot lamp (filter sign-red)
H4P	Pilot lamp (defrost-orange)
SS1	Selector switch (main/sub)
SS2	Selector switch (wireless address set)
Connector for optional parts	
X24A	Connector (wireless remote controller)
X35A	Connector (power supply for adaptor)