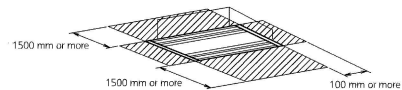
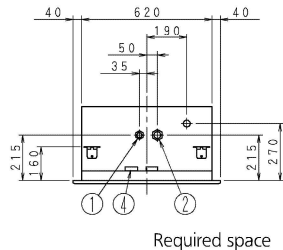
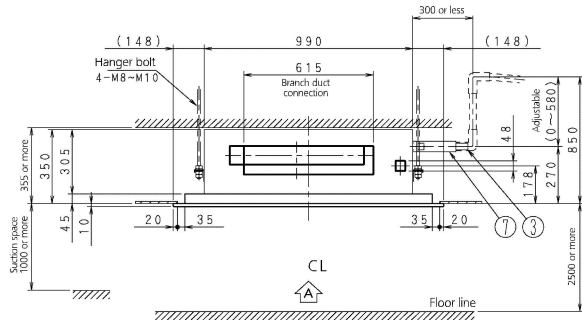
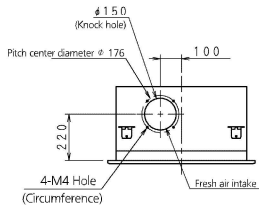
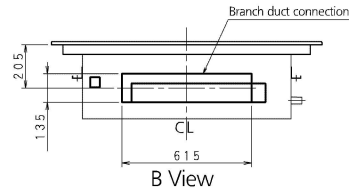
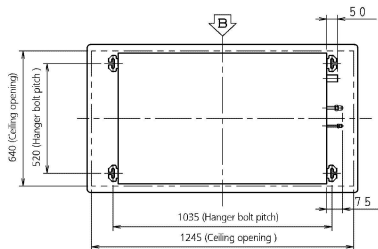
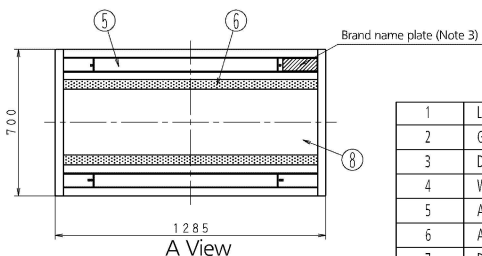


FXCQ63A



Notes:

- Sticking location for manufacturer's label
 Manufacturer's label for indoor unit:
 Suction panel inner side's control box lid surface
 Manufacturer's label for decoration panel:
 Suction panel inner side's panel frame surface
- When installing an optional accessory, refer to the installation drawings.
- In case of using infrared remote controller, this position will be a signal receiver. Refer to the drawing of infrared remote controller in detail.
- When the temperature and humidity in the ceiling exceed 30°C and RH 80%, the additional insulation is required.
 Insulation: Thickness 10mm or more, Glass wool or polyethylene foam.
- Please do not place the thing been damp and troubled under an indoor unit. When the case where humidity is 80% or more, and the drain outlet are choked up and the air filter are dirty, dew may fall.



| | | |
|---|--------------------------|--|
| 1 | Liquid piping connection | ϕ 9.5mm Flare connection |
| 2 | Gas piping connection | ϕ 15.9mm Flare connection |
| 3 | Drain piping connection | VP25 (O.D. ϕ 32, I.D. ϕ 25) |
| 4 | Wiring penetrating hole | |
| 5 | Air outlet | |
| 6 | Air inlet | |
| 7 | Drain hose (Accessory) | O.D. ϕ 32 (Main body side connection: O.D. ϕ 26) |
| 8 | Suction panel | |

3D079630A