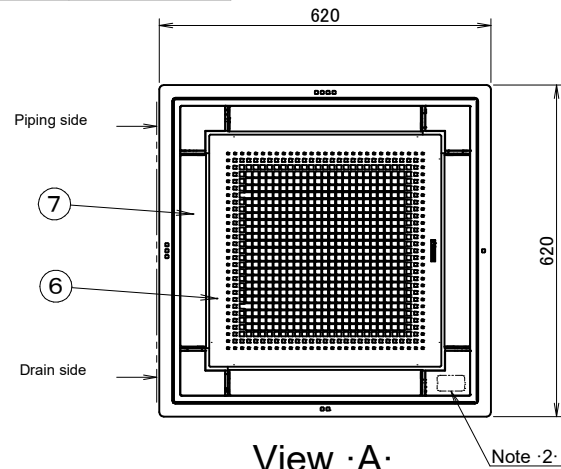


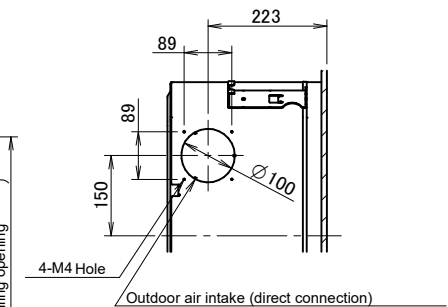
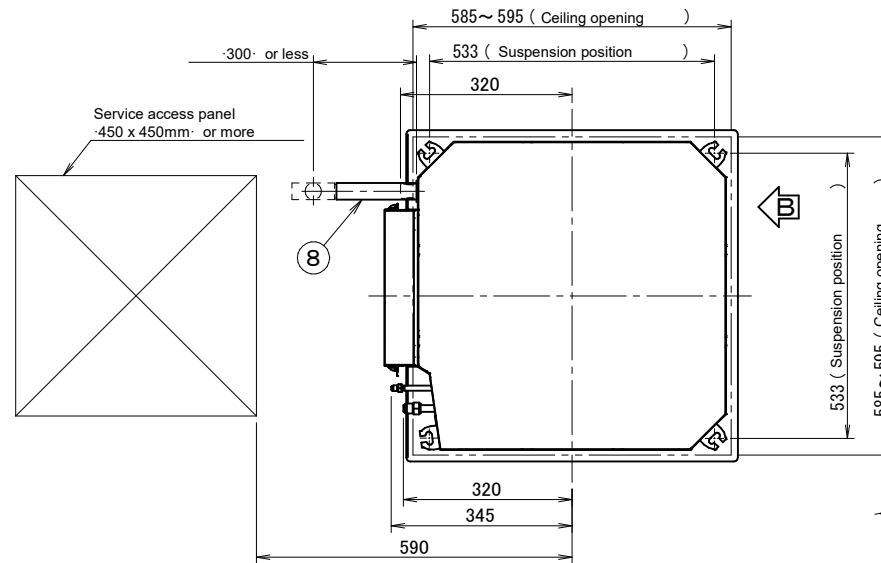
FXZA-A

Decoration panel

| | |
|-------------|--------------------|
| BYFQ60C4W1W | Fresh white ·N9.5· |
| BYFQ60C4W1S | Daikin silver |

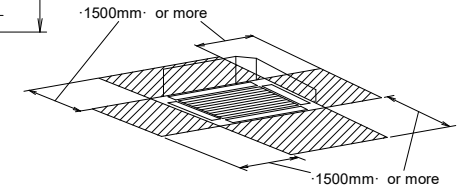


View ·A·

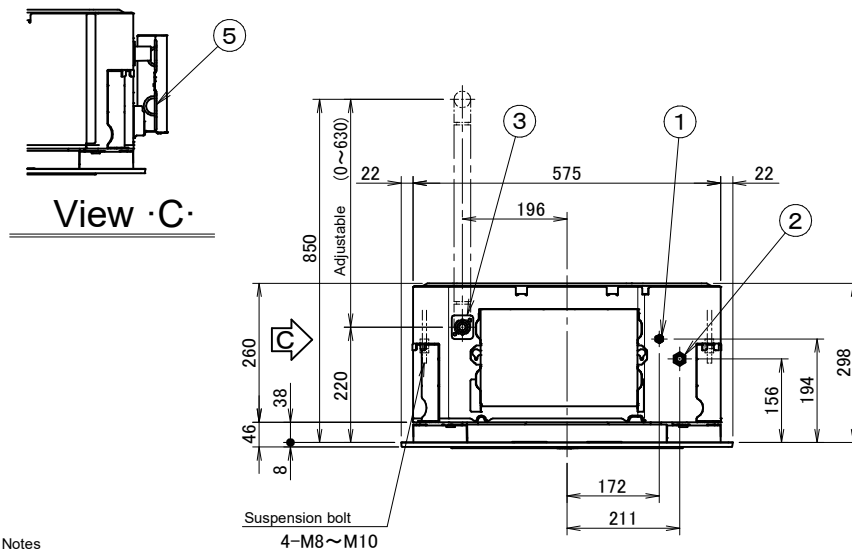


View ·B·

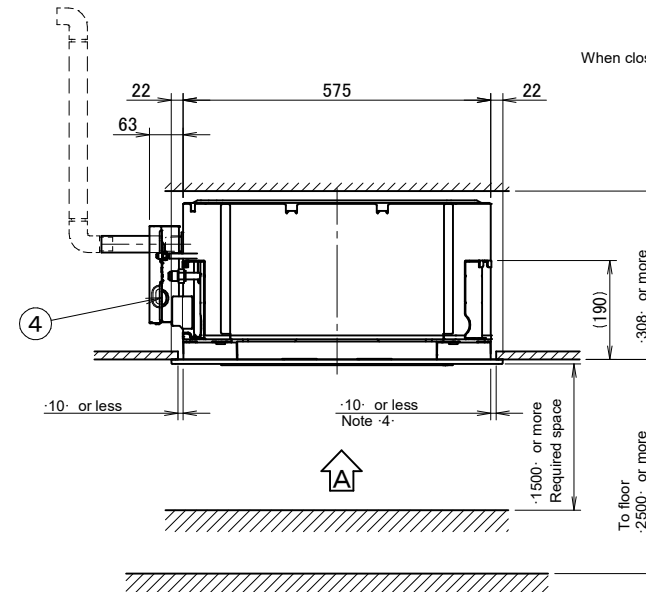
Required space



When closing the air outlet, the required space is ·200·mm or more.



View ·C·



Notes

- Location of nameplate
The indoor unit nameplate is located on the bell mouth inside the suction grille.
The decoration panel nameplate is located on the inner frame inside the suction grille.
- When installing a wireless controller, there will be a receiver on this location.
For details, see the drawing of the wireless controller.
- If any of the following conditions are met, additional insulation (glass wool or polyethylene foam, thickness ≥ 10 mm) is required:
Ambient conditions in the ceiling $\geq -30^{\circ}\text{C}$ and $\cdot 80\%$ relative humidity.
Fresh air is inducted into the ceiling.
The unit operates continuously.
- Though the installation is acceptable up to maximum $\cdot 595\text{ mm}$ square ceiling opening, keep the clearance of $\cdot 10\text{ mm}$ or less between the indoor unit and the ceiling opening, so that the panel overlap allowance can be ensured.

| Item | Part name | Item | Part name |
|------|--|------|---|
| ① | Liquid pipe connection · $\varnothing 6.4$ · | ⑤ | Remote control wiring intake |
| ② | Gas pipe connection ·15-32 $\varnothing 9.5$ · | ⑥ | Air discharge grille |
| ③ | Gas pipe connection ·40-50 $\varnothing 12.7$ · | ⑦ | Air suction grille |
| ④ | Drain outlet ·VP20· Outer: $\varnothing 26$ · | ⑧ | Drain hose Inner: $\varnothing 25$ · |
| | Power supply | | |

3D125141B