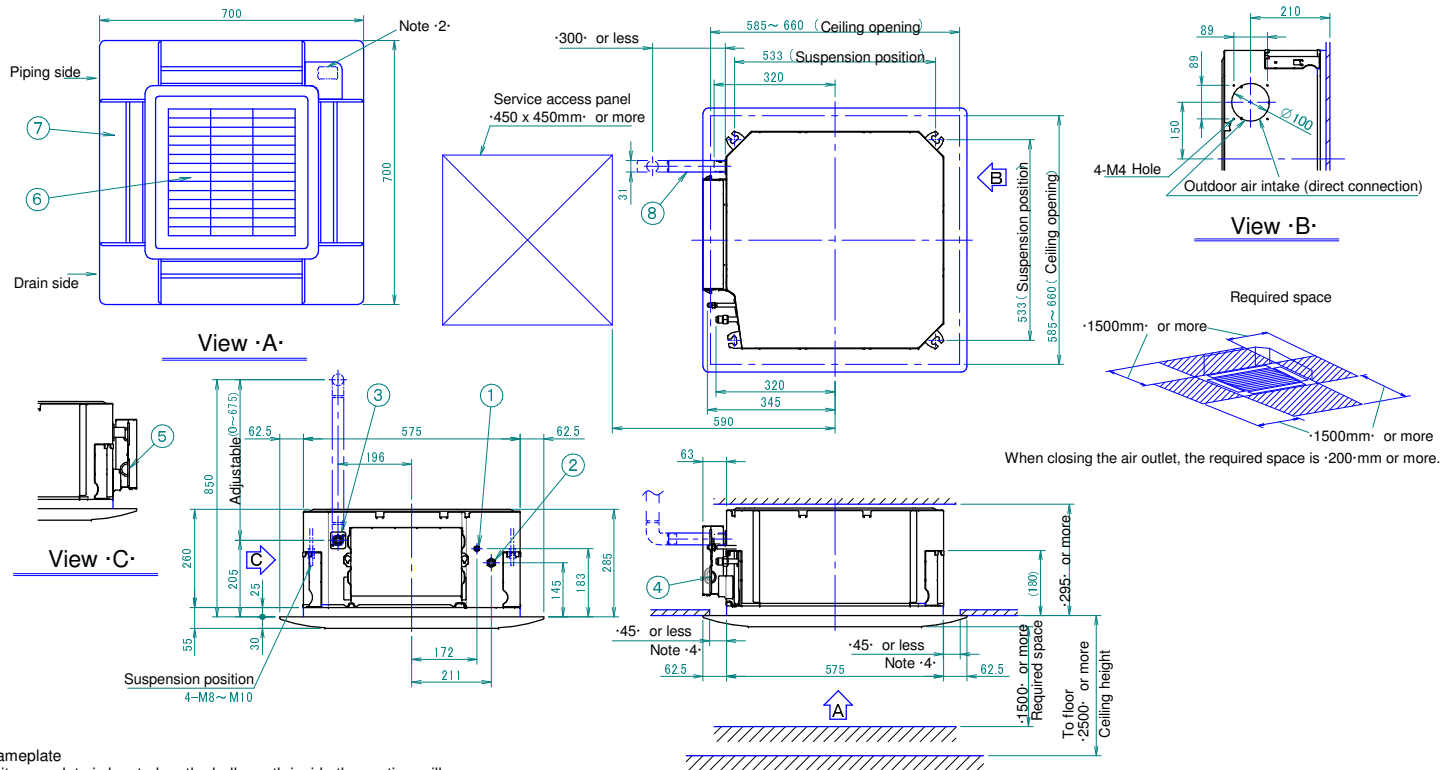


FXZA-A

Decoration panel

BYF060B2W1	White Ral 9010
BYF060B3W1	White Ral 9010



Notes

- Location of nameplate
The indoor unit nameplate is located on the bell mouth inside the suction grille.
The decoration panel nameplate is located on the inner frame inside the suction grille.
- When installing a wireless controller, there will be a receiver on this location.
For details, see the drawing of the wireless controller.
- If any of the following conditions are met, additional insulation (glass wool or polyethylene foam, thickness ≥ 10 -mm) is required:
Ambient conditions in the ceiling $\geq -30^{\circ}\text{C}$ and $\geq 80\%$ relative humidity.
Fresh air is inducted into the ceiling.
The unit operates continuously.
- Though the installation is acceptable up to maximum $\cdot 660$ -mm square ceiling opening, keep the clearance of $\cdot 45$ -mm or less between the indoor unit and the ceiling opening, so that the panel overlap allowance can be ensured.

Item	Part name	Item	Part name
①	Liquid pipe connection : $\varnothing 6.4$	⑤	Remote control wiring intake
②	Gas pipe connection ·15-32 $\varnothing 9.5$ · Gas pipe connection ·40-50 $\varnothing 12.7$ ·	⑥	Air discharge grille
③	Drain outlet ·VP20· Outer: · $\varnothing 26$ ·	⑦	Air suction grille
④	Power supply	⑧	Drain hose Inner: · $\varnothing 25$ ·

3D125613A