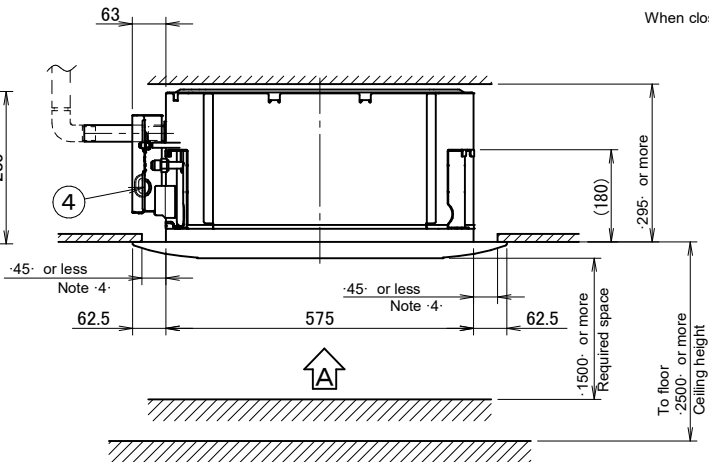
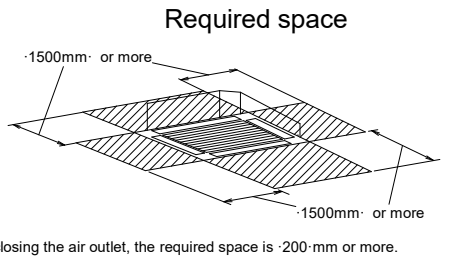
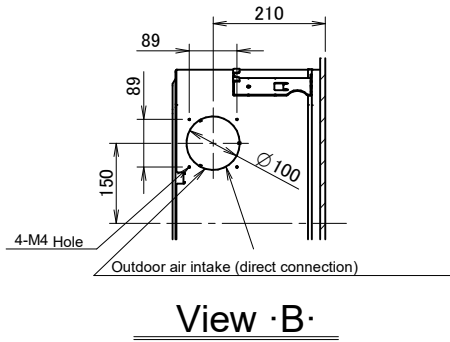
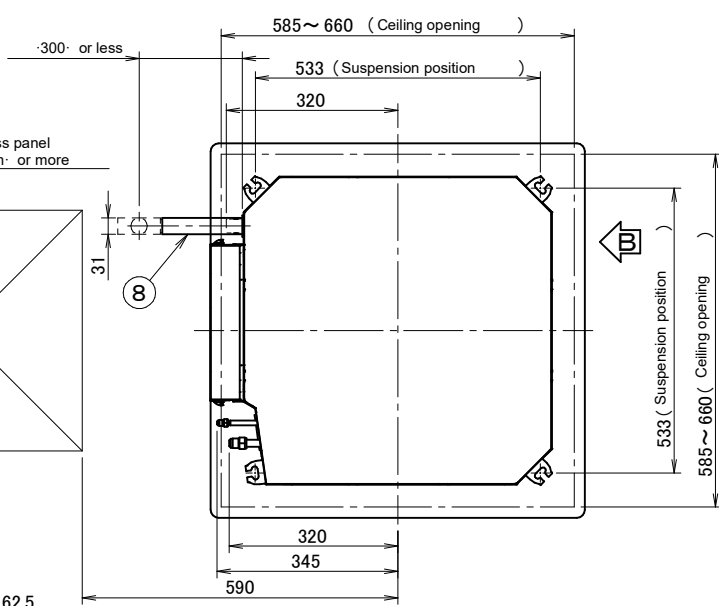
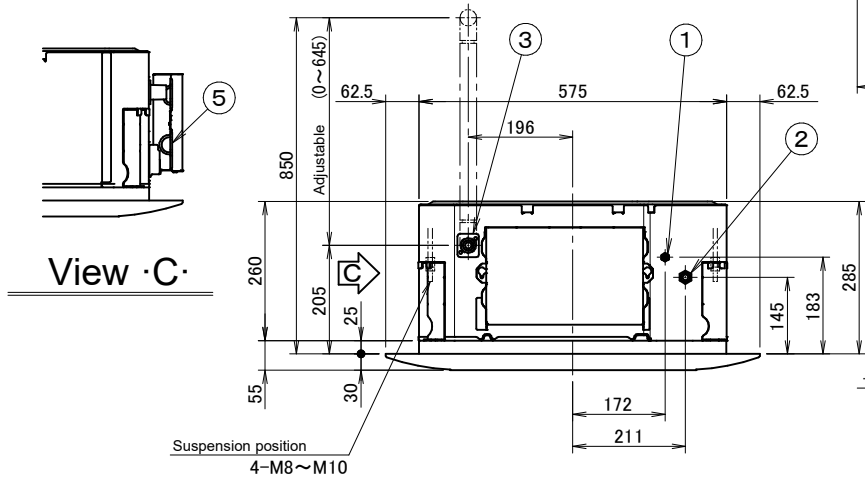
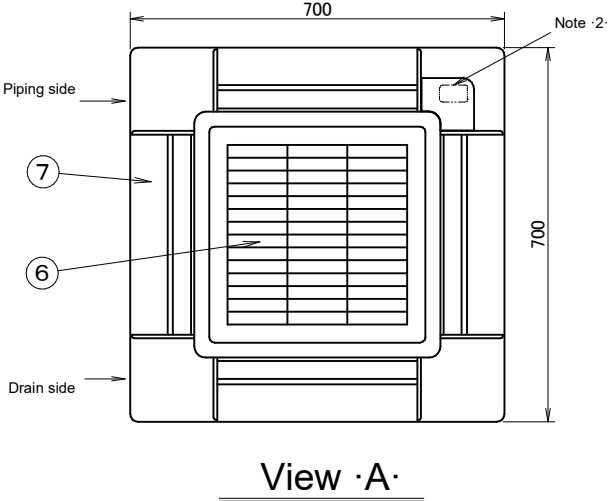


FXZA-A

Decoration panel

BYFQ60B2W1	White Ral 9010
BYFQ60B3W1	White Ral 9010



- Notes
1. Location of nameplate  
The indoor unit nameplate is located on the bell mouth inside the suction grille.  
The decoration panel nameplate is located on the inner frame inside the suction grille.
  2. When installing a wireless controller, there will be a receiver on this location.  
For details, see the drawing of the wireless controller.
  3. If any of the following conditions are met, additional insulation (glass wool or polyethylene foam, thickness ≥ 10 mm) is required:  
Ambient conditions in the ceiling ≥ 30 °C and 80 % relative humidity.  
Fresh air is inducted into the ceiling.  
The unit operates continuously.
  4. Though the installation is acceptable up to maximum 660 mm square ceiling opening, keep the clearance of 45 mm or less between the indoor unit and the ceiling opening, so that the panel overlap allowance can be ensured.

Item	Part name	Item	Part name
①	Liquid pipe connection ·Ø 6.4·	⑤	Remote control wiring intake
②	Gas pipe connection ·15-32 ø9.5·	⑥	Air discharge grille
	Gas pipe connection ·40-50 ø12.7·	⑦	Air suction grille
③	Drain outlet ·VP20· Outer: ·Ø26·	⑧	Drain hose Inner: ·Ø25·
④	Power supply		