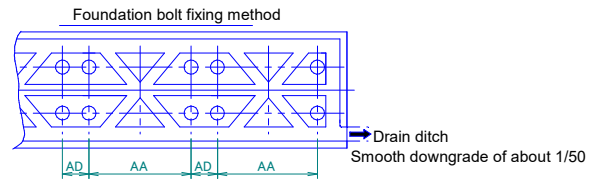
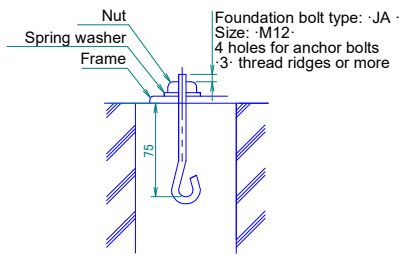
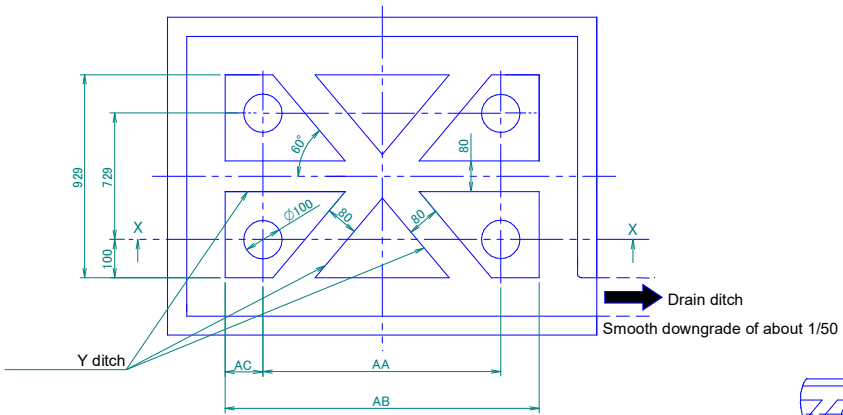
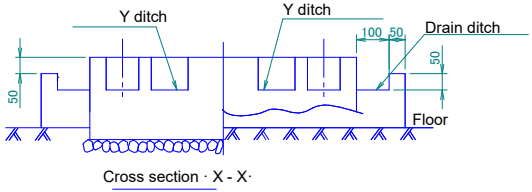


REYA-A REMA5A



When building a foundation on the ground ↔ When building a foundation on a concrete floor



Cross section · X - X'

For multi-unit installation

Model	AA	AB	AC	AD
RYYQ8-12U	766	992	113	185
RYM08-12U				
RXYQ8-12U				
RXYQ08-12U				
REM05T/REYQ8-12U				
RXYT08U				
REMA5A/REYA8-12A				
RYMA5A/RXYA8-12A				
RYYQ14-20U	1076	1076		
RYM014-20U				
RXYQ14-20U				
RXYQ014-20U				
REYQ14-20U				
RXYT010-16U				
REYA14-20A				
RXYA14-20A				

Notes

- 1 Provide a drain ditch around the foundation to drain water from the installation area.
- 2 The surface has to be finished with mortar. The corner edges have to be chamfered.
- 3 Build the foundation on a concrete floor or, if not possible, make sure the foundation surface has a rough finish.
- 4 Use a cement/sand/gravel ratio of 1/2/4 for the concrete, and a diameter of 10 mm for the reinforcement bars (approximately, 300mm intervals).
- 5 When installing the equipment on a roof, make sure to check the strength of the floor and take adequate water proofing measures.