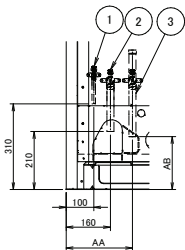
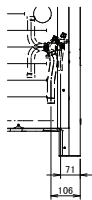


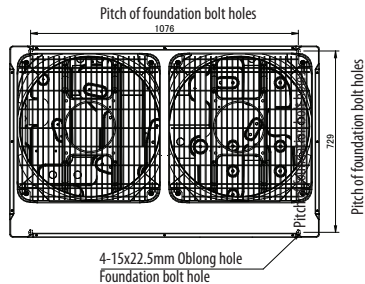
REYA14-20A



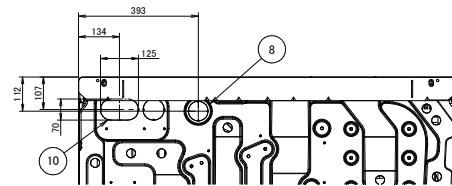
Detail -A-



Detail -B-



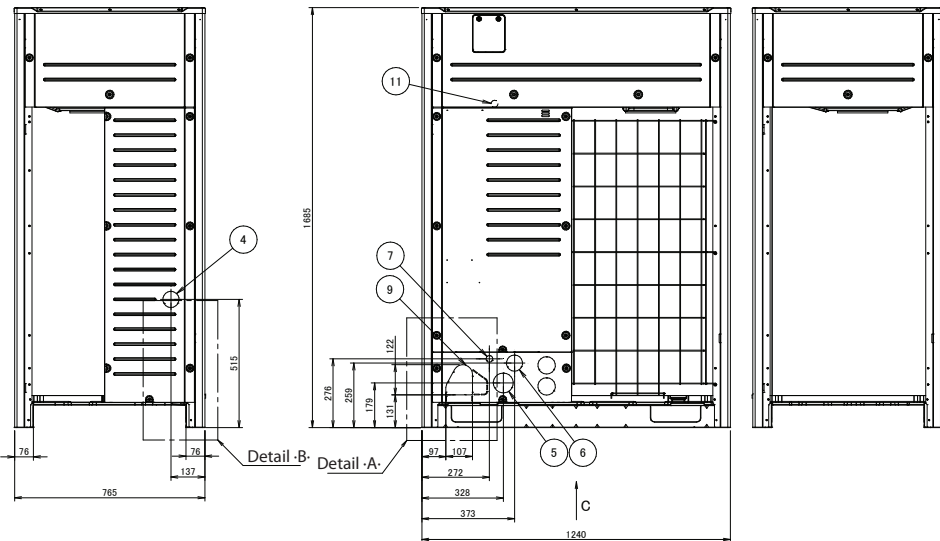
Model	AA	AB
RXYQ14-20U, RYYQ14-20U, RXYQQ14-20U, RXYTQ10-16U	-	-
RYMQ14-16U, REYQ14-20U, REYA14-20A	240	240
RYMQ18-20U	240	192



View -C-

NOTES

- Detail -A- and detail -B- indicate the dimensions after fixing the attached piping.
- Items -4 - 10: Knockout hole.
- Gas pipe**
 REYA14-18A, RXYTQ10U : Ø 22.2- brazing connection
 REYQ14-20U : Ø 25.4- brazing connection
 REYA20A, RYYQ14-20U, RYMQ14-20U, RXYQ14-20U, RXYQQ14-20U, RXYTQ12-16U : Ø 28.6- brazing connection
Liquid pipe
 RXYTQ10U : Ø 9.5- brazing connection
 REYA14-20A, RYYQ14-16U, RYMQ14-16U, RXYQ14-16U, RXYQQ14-16U, REYQ14-20U, RXYTQ12-16U : Ø 12.7- brazing connection
 RYYQ18-20U, RYMQ18-20U, RXYQ18-20U, RXYQQ18-20U : Ø 15.9- brazing connection
Equalising pipe
 RYMQ14-16U : Ø 22.2- brazing connection
 RYMQ18-20U : Ø 28.6- brazing connection
High pressure/low pressure gas pipe
 REYA14-18A, REYQ14-20U : Ø 19.1- brazing connection
 REYA20A : Ø 22.2- brazing connection



Detail -B-

Detail -A-

No.	Parts name	Remarks
1	Liquid pipe connection port	See note -3-
2	Gas pipe connection port	See note -3-
3	Equalising pipe connection port High pressure/low pressure gas pipe	See note -3-
4	Power cord routing hole (side)	Ø65
5	Power cord routing hole (front)	Ø80
6	Power cord routing hole (front)	Ø65
7	Power cord routing hole (front)	Ø27
8	Power cord routing hole (bottom)	Ø65
9	Pipe routing hole (front)	
10	Pipe routing hole (bottom)	
11	Grounding terminal	Inside of the switch box (-M8-)