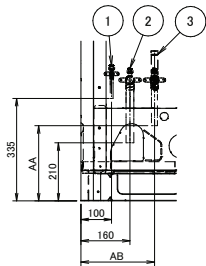
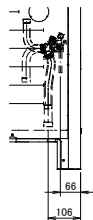


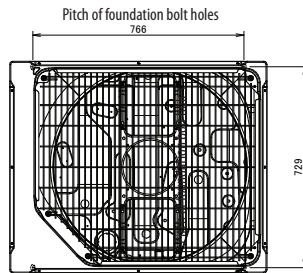
REYA14-20A



Detail -A-

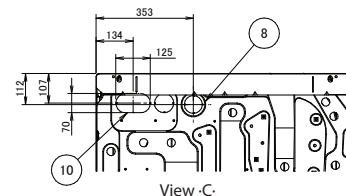


Detail -B-

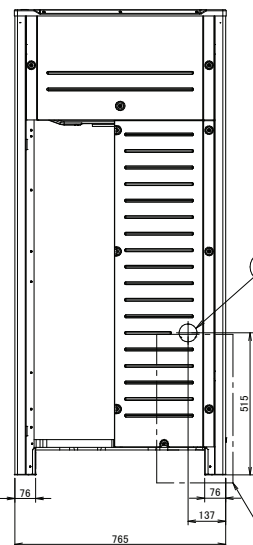


4-15x22.5mm Oblong hole
Foundation bolt hole

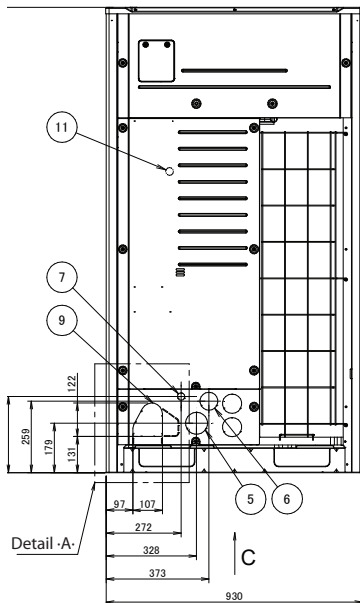
Pitch of foundation bolt holes



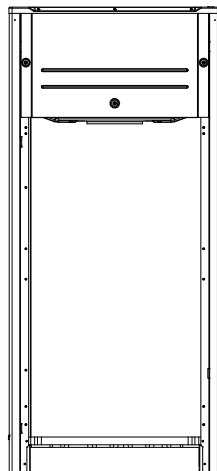
View -C-



Detail -B-



Detail -A-



Model	AA	AB
RYYQ8-12U, RXYQ8-12U, RXYQQ8-12U, RXYTQ8U	-	-
REMQU5U, RYMQU8-12U, REYQ8-12U, REMA5A, REYA8A-12A	240	240

NOTES

1. Detail -A- and detail -B- indicate the dimensions after fixing the attached piping.

2. Items -4 - 10: Knockout hole.

Gas pipe

REMA5A, REYA8-10A, RYYQ8U, RYMQU8U, RXYQ8U, RXYQQ8U, RXYTQ8U : Ø ·19.1· brazing connection

REYA12A, RYYQ10U, RYMQU10U, RXYQ10U, RXYQQ10U : Ø ·22.2· brazing connection

REMQU5U, REYQ8-12U : Ø ·25.4· brazing connection

RYYQ12U, RYMQU12U, RXYQ12U, RXYQQ12U : Ø ·28.6· brazing connection

Liquid pipe

REMA5A, REYA8-10A, RYYQ8-10U, RYMQU8-10U, RXYQ8-10U, RXYQQ8-10U, REMQU5U, REYQ8-12U, RXYTQ8U : Ø ·9.5· brazing connection

REYA12A, RYYQ12U, RYMQU12U, RXYQ12U, RXYQQ12U : Ø ·12.7· brazing connection

Equalising pipe

RYMQ8-10U : Ø ·19.1· brazing connection

RYMQ12U : Ø ·22.2· brazing connection

High pressure/low pressure gas pipe

REMA5A, REYA8-10A : Ø ·15.9· brazing connection

REYA12A, REMQU5U, REYQ8-12U : Ø ·19.1· brazing connection

No.	Parts name	Remarks
1	Liquid pipe connection port	See note -3-
2	Gas pipe connection port	See note -3-
3	Equalising pipe connection port High pressure/low pressure gas pipe	See note -3-
4	Power cord routing hole (side)	Ø65
5	Power cord routing hole (front)	Ø80
6	Power cord routing hole (front)	Ø65
7	Power cord routing hole (front)	Ø27
8	Power cord routing hole (bottom)	Ø65
9	Pipe routing hole (front)	
10	Pipe routing hole (bottom)	
11	Grounding terminal	Inside of the switch box (-M8-)