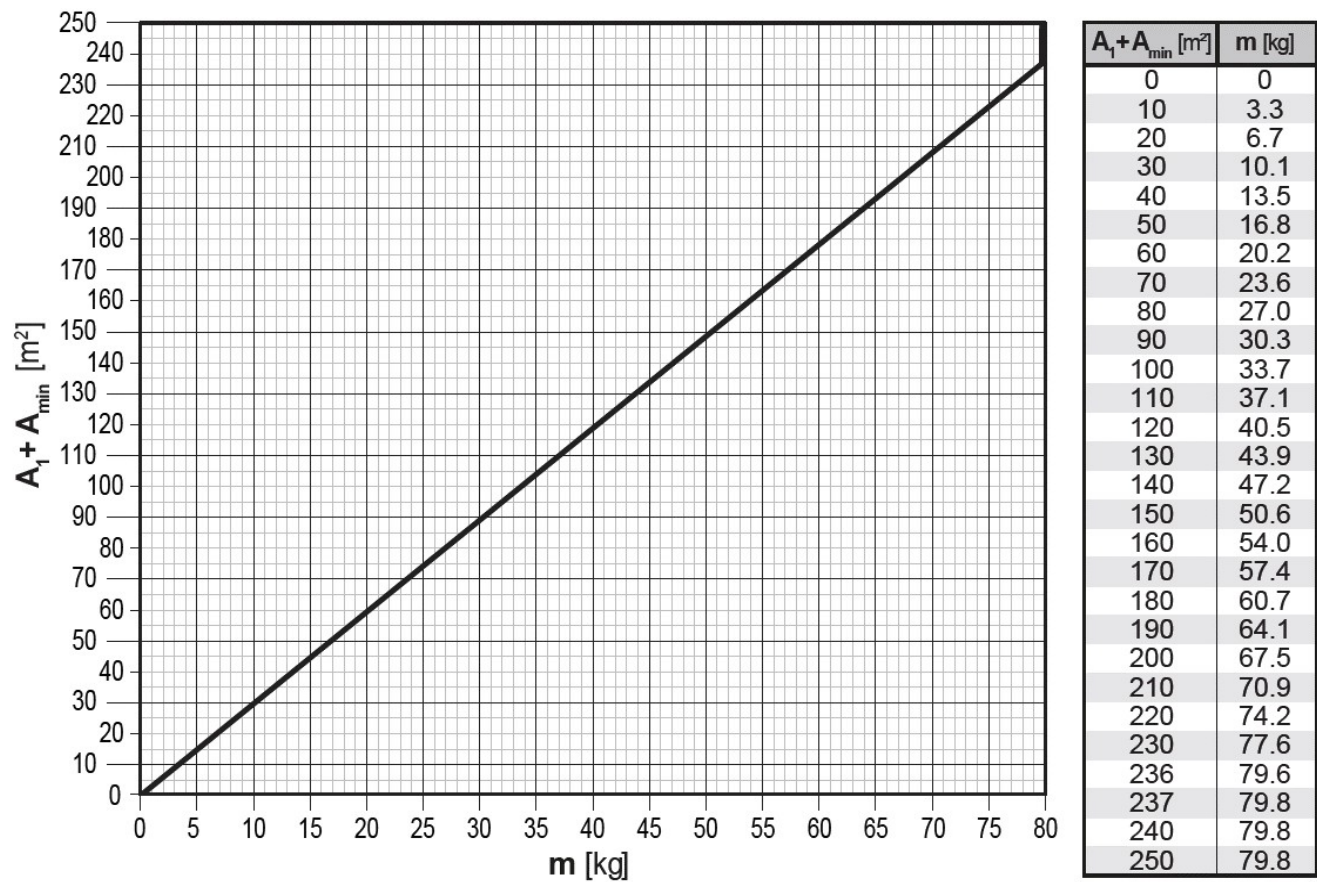


Indoor unit installation

Table ·2·



- Step ·3·  
The total amount of refrigerant in the system shall be less than or equal to the maximum allowed total refrigerant amount.
- If NOT, natural ventilation safety measure is not allowed.
- Step ·4·  
The partition between two rooms on the same floor MUST meet one of the two requirements for natural ventilation.
- For details, see the manual of the ·outdoor· unit.

Shut-off valves

- SV· unit which has shut-off valves needs to be installed to reduce the amount of refrigerant leakage in to the room where the indoor unit is installed.
- When the R32 sensor in the indoor unit detects a refrigerant leak, the corresponding shut-off valves in the ·SV· unit close.
- Follow the flowchart. Details are described in the manual of the outdoor unit.