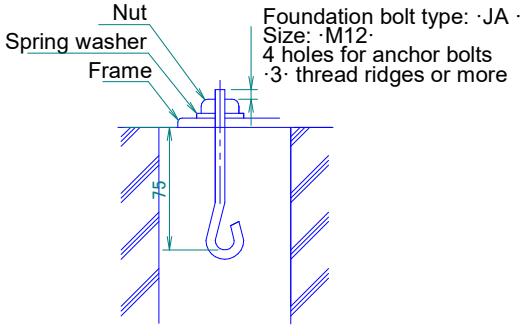
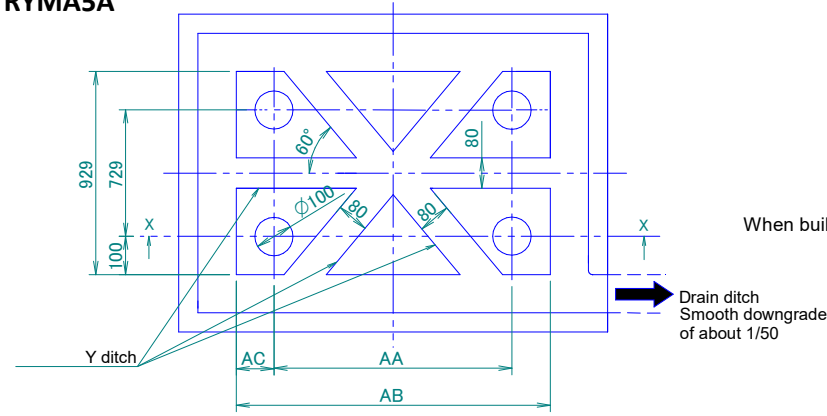
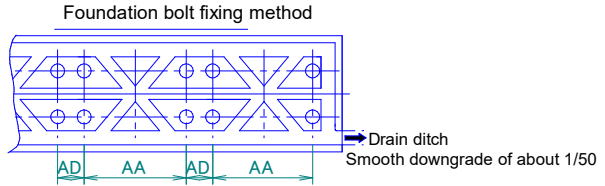


RXYA-A  
RYMA5A

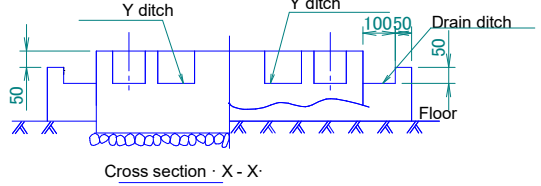


Notes

1. Provide a drain ditch around the foundation to drain water from the installation area.
2. The surface has to be finished with mortar. The corner edges have to be chamfered.
3. Build the foundation on a concrete floor or, if not possible, make sure the foundation surface has a rough finish.
4. Use a cement/sand/gravel ratio of 1/2/4 for the concrete, and a diameter of 10 mm for the reinforcement bars (approximately, 300mm intervals).
5. When installing the equipment on a roof, make sure to check the strength of the floor and take adequate water proofing measures.



When building a foundation on the ground ⇄ When building a foundation on a concrete floor



For multi-unit installation

Model	AA	AB	AC	AD
RYYQ8-12U RYMQ8-12U RXYQ8-12U RXYQQ8-12U REMQ5T/REYQ8-12U RXYTQ8U REMA5A/REYA8-12A RYMA5A/RXYA8-12A	766	992	113	185
RYYQ14-20U RYMQ14-20U RXYQ14-20U RXYQQ14-20U REYQ14-20U RXYTQ10-16U REYA14-20A RXYA14-20A	1076	1076		