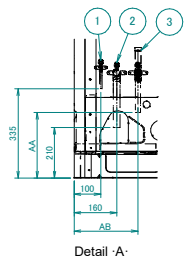
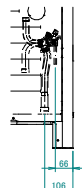


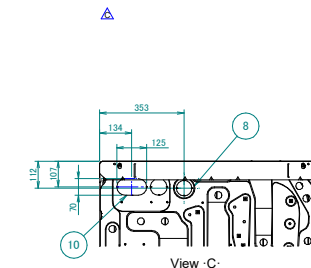
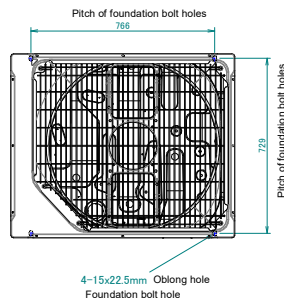
RXYQ8-12U



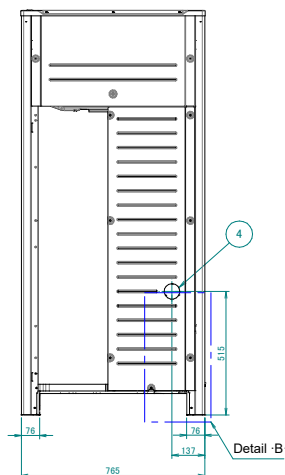
Detail -A-



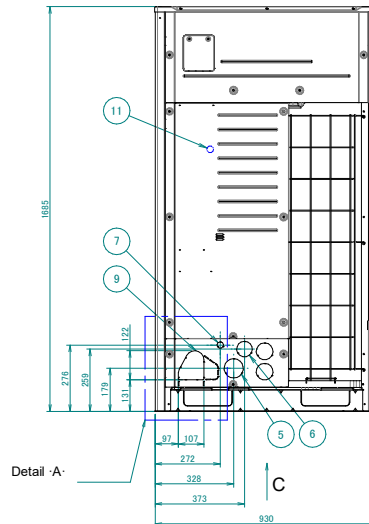
Detail -B-



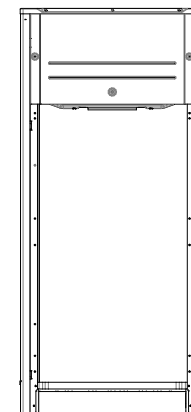
View -C-



Detail -B-



Detail -A-



Notes

- Detail -A- and detail -B- indicate the dimensions after fixing the attached piping.
- Items 4 - 10:- Knockout hole.

3. Gas pipe

- REMA5A*, REYA8-10A*, RYYQ8U, RYMQ8U, RXYQ8U, RXYQ8U, RXYTQ8U : Ø -19.1- brazing connection
 REYA12A*, RYYQ10U, RYMQ10U, RXYQ10U, RXYQ10U : Ø -22.2- brazing connection
 REMQ8U, REYQ8-12U : Ø -25.4- brazing connection
 RYYQ12U, RYMQ12U, RXYQ12U, RXYQ12U : Ø -28.6- brazing connection

Liquid pipe

- REMA5A*, REYA8-10A*, RYYQ8-10U, RYMQ8-10U, RXYQ8-10U, RXYQ8-10U : Ø -9.5- brazing connection
 REMQ8U, REYQ8-12U, RXYTQ8U : Ø -12.7- brazing connection
 REYA12A*, RYYQ12U, RYMQ12U, RXYQ12U, RXYQ12U : Ø -12.7- brazing connection

Equalising pipe

- RYMQ8-10U : Ø -19.1- brazing connection
 RYMQ12U : Ø -22.2- brazing connection

High pressure/low pressure gas pipe

- REMA5A*, REYA8-10A* : Ø -15.9- brazing connection
 REYA12A*, REMQ8U, REYQ8-12U : Ø -19.1- brazing connection

		Model	AA	AB
		RYT08-12U, RXY08-12U, RXY008-12U, RXYT08U	-	-
		REMSU, RYM8-12U, REY08-12U, REM5A*, REYA8-12A*	240	240
No.	Part name	Remark		
1	Liquid pipe connection port	See note -3-		
2	Gas pipe connection port	See note -3-		
3	Equalising pipe connection port High pressure/low pressure gas pipe	See note -3-		
4	Power cord routing hole (side)	Ø65		
5	Power cord routing hole (front)	Ø80		
6	Power cord routing hole (front)	Ø65		
7	Power cord routing hole (front)	Ø27		
8	Power cord routing hole (bottom)	Ø65		
9	Pipe routing hole (front)			
10	Pipe routing hole (bottom)			
11	Grounding terminal	Inside of the switch box (-M8-)		