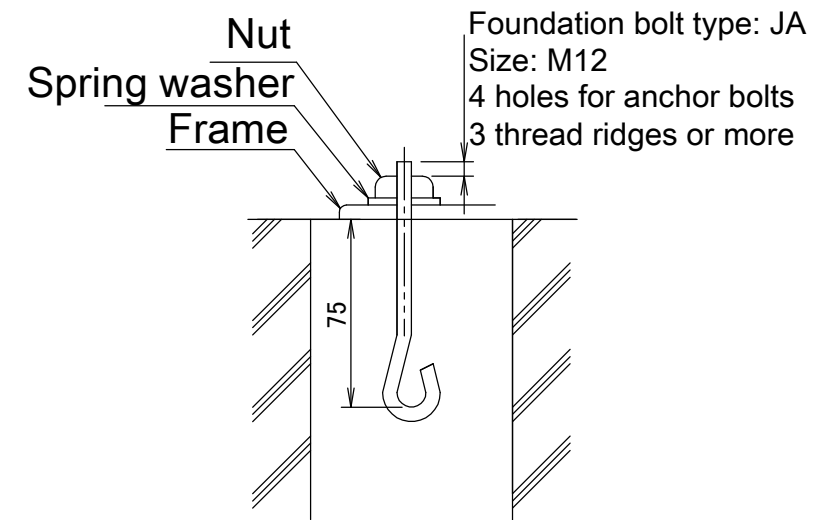
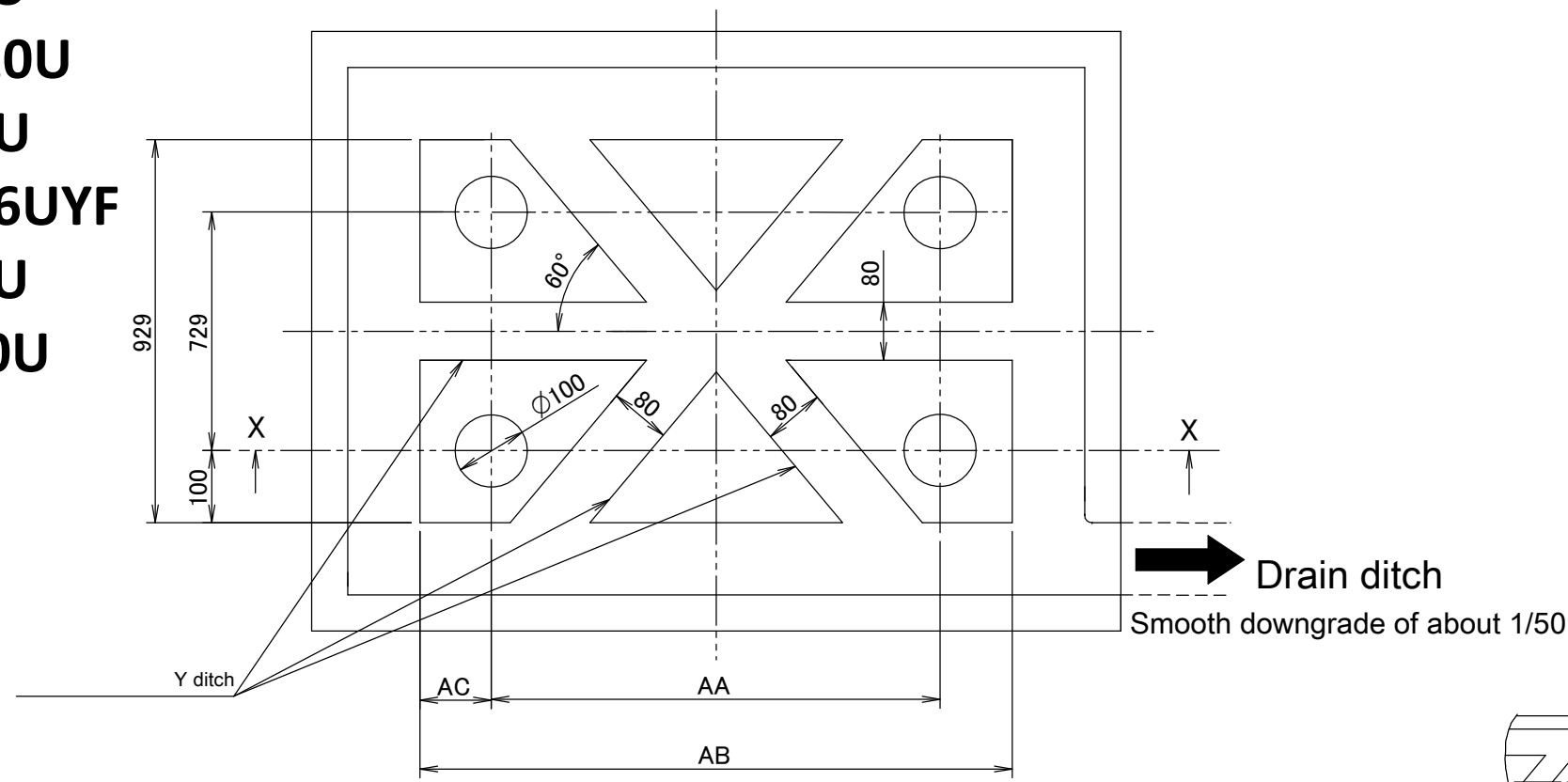
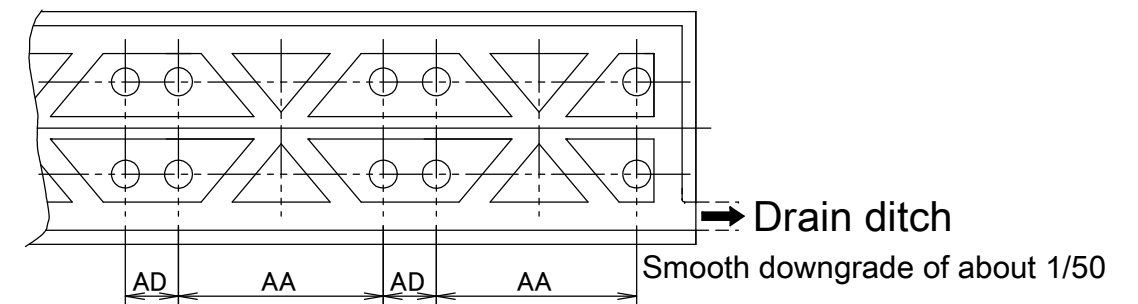


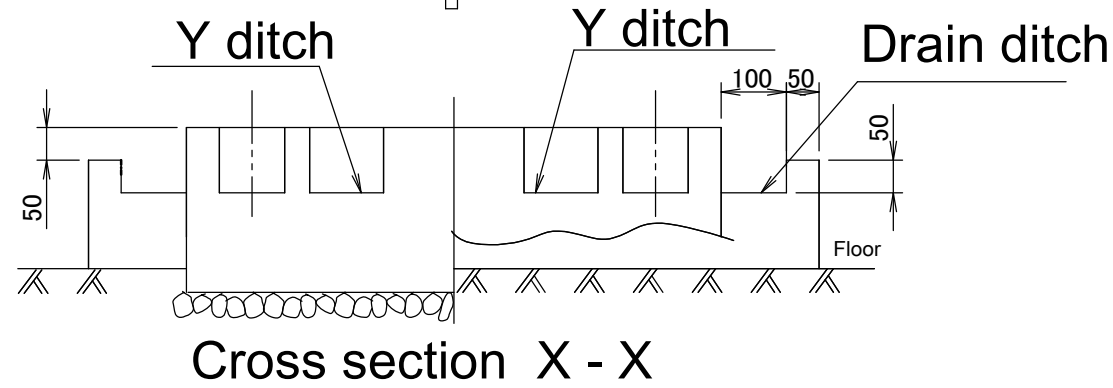
REMQ5U
REYQ8-20U
RXYQQ8-20U
RXYQ8-20U
RXYTQ8-16UYF
RYYQ8-20U
RYMQ8-20U



Foundation bolt fixing method



When building a foundation on the ground ↔ When building a foundation on a concrete floor



Cross section X - X

For multi-unit installation

Model	AA	AB	AC	AD
RYYQ8-12U RYMQ8-12U RXYQ8-12U RXYQQ8-12U REMQ5T/REYQ8-12U RXYTQ8U	766	992	113	185
RYYQ14-20U RYMQ14-20U RXYQ14-20U RXYQQ14-20U REYQ14-20U RXYTQ10-16U	1076	1076		

Notes

1. Provide a drain ditch around the foundation to drain water from the installation area.
2. The surface has to be finished with mortar. The corner edges have to be chamfered.
3. Build the foundation on a concrete floor or, if not possible, make sure the foundation surface has a rough finish.
4. Use a cement/sand/gravel ratio of 1/2/4 for the concrete, and a diameter of 10 mm for the reinforcement bars (approximately, 300mm intervals).
5. When installing the equipment on a roof, make sure to check the strength of the floor and take adequate water proofing measures.