

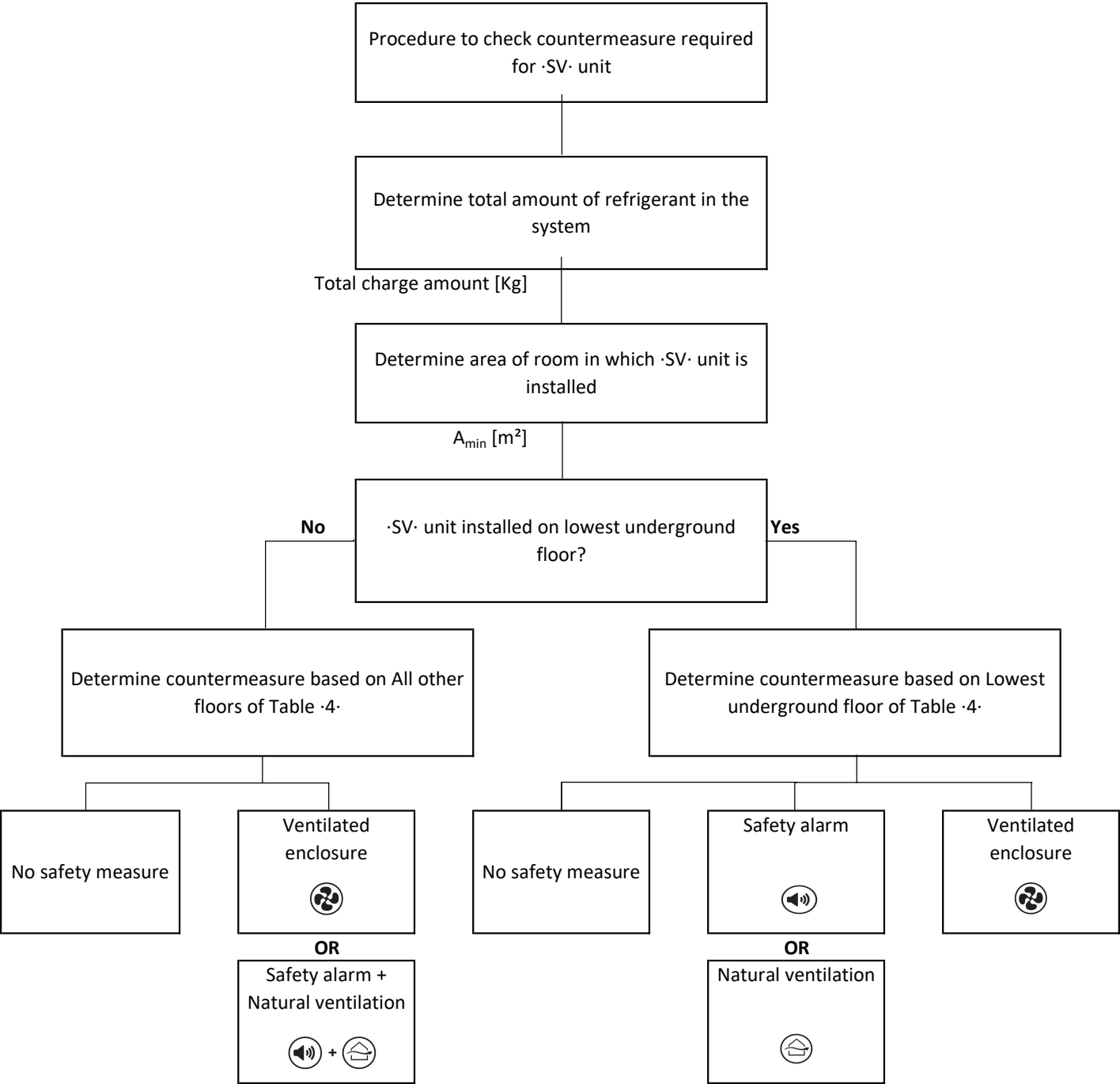
·SV· unit installation

Depending on the room size in which the ·SV· unit is installed and the total amount of refrigerant in the system, different safety measures can be applied.

Follow the flowchart. Details are described in the manual of ·SV· unit.

Note: If the installation height is more than ·2.2· m, different boundaries for the applicable safety measures can apply.

To know which safety measure is required in case the installation height is more than ·2.2· m, refer to VRV Xpress (<https://vrvxpress.daikin.eu/>).



\* Do NOT use the external safety alarm if the ·SV· unit is installed in an occupied space where people are restricted in their movement.