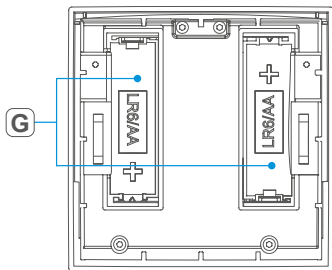
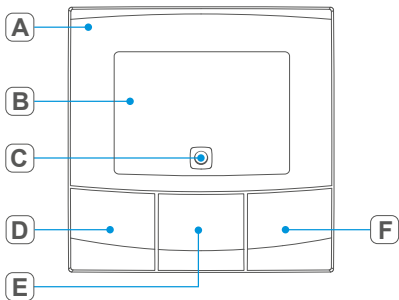


## Installer and user reference guide

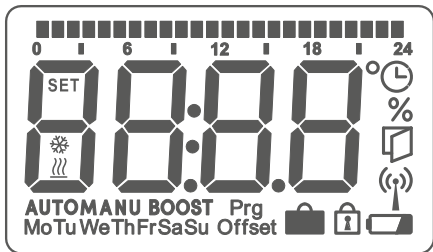
### Daikin Home Controls Room Thermostat – 1



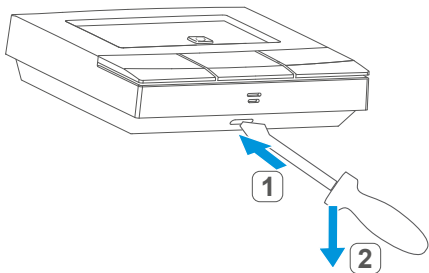
1



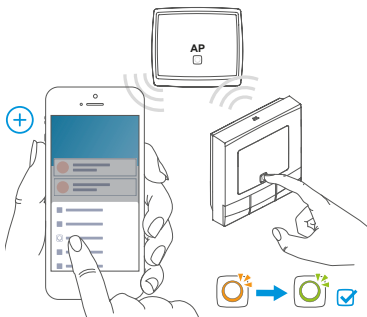
2



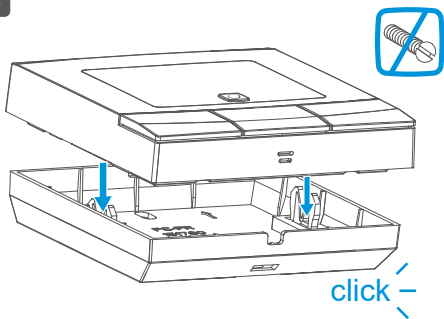
3



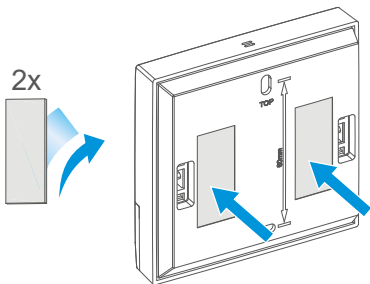
4



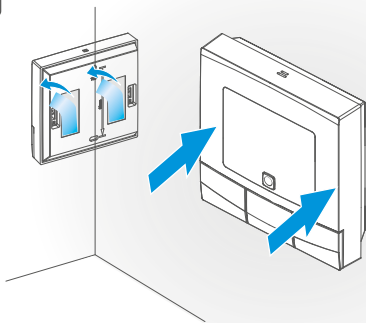
5



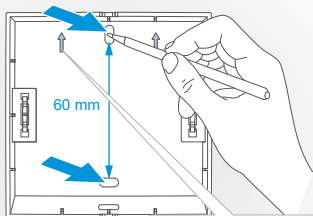
6



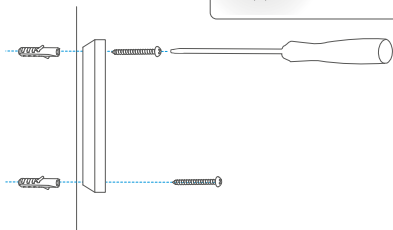
7



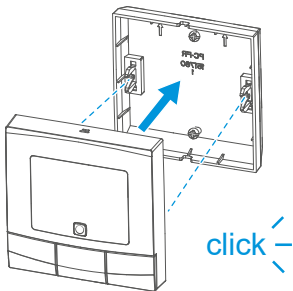
8



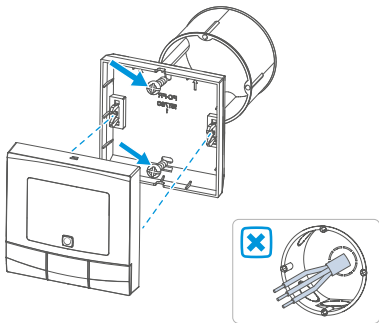
9



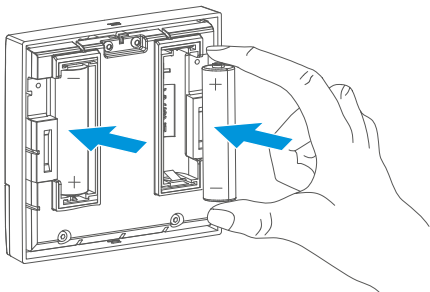
10



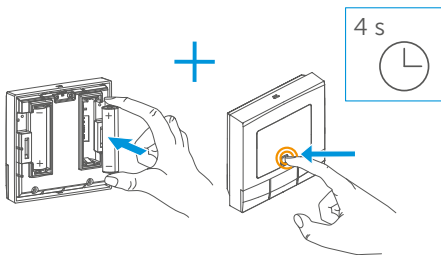
11



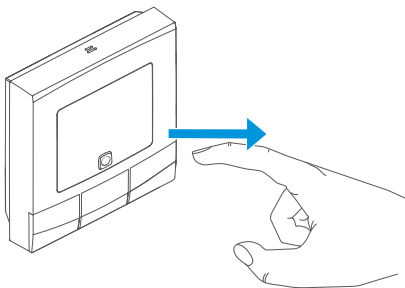
12



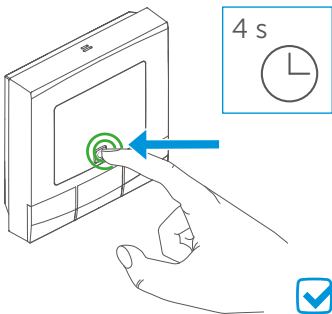
13



14



15



# Package contents

<b>Quantity</b>	<b>Description</b>
1	Daikin Home Controls Room Thermostat – 1
1	Wall mounting bracket
2	Double-sided adhesive strips
2	Screws 3.0 x 30 mm
2	Plugs 5 mm
2	1.5 V LR6/mignon/AA batteries
1	Installation and operation manual
1	Supplement sheet with safety instructions

Documentation © 2022 Daikin Europe N.V., Belgium

All rights reserved. This manual may not be reproduced in any format, either in whole or in part, nor may it be duplicated or edited by electronic, mechanical or chemical means, without the written consent of the publisher.

Typographical and printing errors cannot be excluded. However, the information contained in this manual is reviewed on a regular basis and any necessary corrections will be implemented in the next edition. We accept no liability for technical or typographical errors or the consequences thereof.

All trademarks and industrial property rights are acknowledged.

Printed in Hong Kong.

Changes may be made without prior notice as a result of technical advances.

---

# Table of contents

1	Information about this manual .....	13
2	Hazard information .....	13
3	Daikin Home Controls .....	15
4	Function and accessory overview .....	16
5	Start-up.....	18
5.1	Connecting DHC accessories .....	18
5.1.1	Connecting to the DHC Access Point .....	18
5.2	Mounting .....	20
5.2.1	Adhesive strip mounting .....	20
5.2.2	Screw mounting.....	21
5.2.3	Flush-mounted box mounting .....	22
6	Configuration .....	24
6.1	Automatic mode .....	24
6.2	Manual mode .....	25
6.3	Offset temperature (not yet available).....	25
6.4	Programming a schedule .....	25
6.5	Operating lock (not yet available).....	26
6.6	Holiday mode .....	26
7	Operation.....	27
8	Replacing batteries.....	28
9	Troubleshooting.....	29
9.1	Weak battery .....	29
9.2	Duty cycle .....	30
9.3	Error codes and flashing sequences.....	31
10	Restore factory settings.....	33
11	Maintenance and cleaning .....	34

---

12	General information about radio operation.....	35
13	Technical specifications.....	36

## 1 Information about this manual

Read this manual carefully before beginning operation with your Daikin Home Controls (DHC) accessories. Keep the manual so you can refer to it at a later date if you need to. If you hand over the accessory to other persons for use, hand over this manual as well.

### Symbols used:



#### **Attention!**

This indicates a hazard.



#### **Please note:**

This section contains important additional information.

## 2 Hazard information



Do not open the accessory. It does not contain any parts that can be maintained by the user. In the event of an error, have the accessory checked by an expert.



For safety and licensing reasons (CE), unauthorized change and/or modification of the accessory is not permitted.



The accessory may only be operated in a dry and dust-free environment and must be protected from the effects of moisture, vibrations, solar or other types of heat radiation, cold and mechanical loads.



The accessory is not a toy; do not allow children to play with it. Do not leave packaging material lying around. Plastic films/bags, pieces of polystyrene, etc. can be dangerous in the hands of a child.



We do not assume any liability for damage to property or personal injury caused by improper use or the failure to observe the hazard information. In such cases, any claim under warranty is extinguished! For consequential damages, we assume no liability!



The accessory may only be operated within residential buildings.



Using the accessory for any purpose other than that described in this operating manual does not fall within the scope of intended use and shall invalidate any warranty or liability.



Always keep a minimum distance of 50 cm between the DHC accessories.

### 3 Daikin Home Controls

This accessory is part of the DHC ecosystem and communicates with a dedicated wireless connection.

All accessories of the system can be configured comfortably and individually via the ONECTA app. The available functions provided by the DHC ecosystem in combination with other accessories are described in the DHC Application Guide.

All current technical documents and updates can be found on the product pages:

<https://qr.daikin.eu/?N=EKRCTRDI2BA>



## 4 Function and accessory overview

The DHC Room Thermostat enables time-controlled regulation of your conventional radiators with DHC Radiator Thermostats, or of your floor heating in combination with DHC Floor Heating Controllers, and adjusts heating time slots to your individual needs.

The DHC Room Thermostat measures the room temperature and humidity and transmits these at intervals to the DHC Radiator Thermostats or DHC Floor Heating Controllers enabling room temperatures to be precisely controlled.

You can comfortably control the DHC Room Thermostat in combination with a DHC Access Point via the free app.

Thanks to battery operation and radio communication, the DHC Room Thermostat is highly flexible concerning the mounting location.

### **Accessory overview** (see figure 1):

- (A) Electronic unit (thermostat)
- (B) Display
- (C) System button and LED
- (D) Minus button
- (E) Menu/Boost button
- (F) Plus button
- (G) Battery compartment

**Display overview** (see figure 2):

°C Setpoint/actual temperature



Open window symbol



Battery symbol



Radio transmission

**BOOST** Boost function

**MANU** Manual mode\*

**AUTO** Automatic mode\*



Holiday mode\*



Heating



Cooling



Operating lock\*

**SET** Setpoint temperature



Overview of time slots



Date and time

**Offset** Offset temperature\*

**Prg** Programming a schedule\*

**MoTuWeThFrSaSu** Days of the week

\* see "6 Configuration" on page 24

## 5 Start-up

### 5.1 Connecting DHC accessories



**Read this entire section before starting to connect other accessories.**

To integrate the DHC Room Thermostat into your ecosystem and enable it to communicate with other accessories, you must connect them first.

You can connect the DHC Room Thermostat to the DHC Access Point via the ONECTA app. It is also possible to create a direct connection to other DHC accessories. For further information on direct connection, see the DHC Application Guide.

#### 5.1.1 Connecting to the DHC Access Point



First set up your DHC Access Point via the ONECTA app to enable operation of other DHC accessories within your system. For further information, see the manual of the DHC Access Point.



After connecting the DHC Room Thermostat to the DHC Access Point, the menu of the DHC Room Thermostat will be hidden and settings can be adjusted only via the ONECTA app.

To connect the DHC Room Thermostat to the DHC Access Point, proceed as follows:

1. Open the ONECTA app.
2. Click on the plus symbol (+).
3. Select the menu item **Add Daikin Home Controls**.
4. Select **Add DHC Accessory** (see *figure 4*).
5. Open the battery compartment (**G**) using a slotted screwdriver to loosen the wall mounting plate (see *figure 3*).
6. Remove the insulation strip from the battery compartment.
  - » Connection mode remains activated for 3 minutes.



You can manually start the connection mode for another 3 minutes by pressing the system button (**C**) shortly (see *figure 4*).

7. Follow the instructions in the app.

## 5.2 Mounting



**Read this entire section before starting to mount the accessory.**

You can fix the DHC Room Thermostat to a wall with:

- the supplied double-sided adhesive strips, or
- the supplied screws.

You can also mount the DHC Room Thermostat on a flush-mounted box.

### 5.2.1 Adhesive strip mounting

To mount the DHC Room Thermostat using the adhesive strips, proceed as follows:

1. Choose a site for installation.



Make sure that the mounting surface is smooth, solid, non-disturbed, free of dust, grease and solvents and not too cold to ensure long-time adherence.

2. Insert the electronic unit (**A**) into the wall mounting plate (see *figure 5*). Make sure that the electronic unit properly engages into the wall mounting plate.
3. Fix the adhesive strips on the back side of the wall mounting plate in the provided area. You should be able to read the letters (“TOP”) on the back side (see *figure 6*).

4. Remove the protective film from the adhesive strips (see figure 7).
5. Press the assembled DHC Room Thermostat with the back side to the wall (see figure 7).

### 5.2.2 Screw mounting

To mount the DHC Room Thermostat with screws, proceed as follows:

1. Choose a site for installation.



Make sure that no electricity or similar lines run in the wall at this location!

2. Position the wall mounting plate on the desired site on the wall. Make sure that the arrows on the back side of the wall mounting plate point upwards (see figure 8).
3. Use a pen to mark the positions of the two screw holes according to the wall mounting plate, with a distance of 60 mm, on the wall (see figure 8).
4. Drill the marked holes (see figure 9).



If you are working with a stone wall, drill the marked 5 mm holes and insert the plugs supplied. If you are working with a wooden wall, you can pre-drill 1.5 mm holes to easier insert the screws.

5. Use the supplied screws and plugs to fix the wall

mounting plate to the wall (see figure 9).

6. Insert the electronic unit (**A**) into the wall mounting plate (see figure 10). Make sure that the electronic unit properly engages into the wall mounting plate.

### 5.2.3 Flush-mounted box mounting

You can mount the DHC Room Thermostat on a flush-mounted box using the screw holes (see figure 11).



If the accessory is mounted to a flush-mounted box, there may be no open conductor ends.



If changes or works have to be made on the house installation (e.g. extension, bypass of switch or socket inserts) or the low-voltage distribution for mounting or installing the accessory, the following safety instruction must be considered:



Only to be installed by persons with the relevant electro-technical knowledge and experience!\*

Incorrect installation can put your own life at risk and the lives of other users of the electrical system. Incorrect installation also means that you are running the risk of serious damage to property, e.g. because of a fire. You may be personally liable in the event of injuries or damage to property.

**Contact an electrical installer!**

**\*Specialist knowledge required for installation:**



The following specialist knowledge is particularly important during installation:

- The “5 safety rules” to be used: Disconnect from mains; Safeguard from switching on again; Check that system is de-energised; Earth and short circuit; Cover or cordon off neighbouring live parts;
- Select suitable tools, measuring equipment and, if necessary, personal safety equipment;
- Evaluation of measuring results;
- Selection of electrical installation material for safeguarding shut-off conditions;
- IP protection types;
- Installation of electrical installation material;
- Type of supply network (TN system, IT system, TT system) and the resulting connecting conditions (classical zero balancing, protective earthing, required additional measures etc.).

## 6 Configuration

The configuration of the accessory can be set up completely in the ONECTA app. For further information on configuration of the accessory without using the DHC Access Point, see the DHC Application Guide.

The following modes and settings can be adjusted:

6.1	<b>AUTO</b>	Automatic mode
6.2	<b>MANU</b>	Manual mode
6.3	<b>Offset</b>	Offset temperature (not yet available)
6.4	<b>Prg</b>	Programming a schedule
6.5		Operating lock (not yet available)
6.6		Holiday mode

### 6.1 Automatic mode

In automatic mode, the temperature is controlled in accordance with the set schedule. Manual changes are activated until the next point at which the schedule changes. Afterwards, the defined schedule will be activated again.

## 6.2 Manual mode

In manual mode, the temperature is controlled in accordance with the current temperature set via the push-buttons (**D + F**). The temperature remains activated until the next manual change.

## 6.3 Offset temperature (not yet available)

As the temperature is measured on the DHC Room Thermostat, the temperature distribution can vary throughout a room. To adjust this, a temperature offset of  $\pm 3.5$  °C can be set. If a nominal temperature of e.g. 20 °C is set but the room presents with only 18 °C, an offset of -2.0 °C needs to be set. An offset temperature of 0.0 °C is set in the factory settings.



This setting is not yet available in the ONECTA app and cannot be changed for the moment.

## 6.4 Programming a schedule

You can create a schedule with time slots for heating and cooling according to your personal needs. For further information, see the DHC Application Guide.

## 6.5 Operating lock (not yet available)

Operation of the accessory can be locked to avoid settings being changed unintended (e.g. through involuntary touching).



This setting is not yet available in the ONECTA app and cannot be changed for the moment.

## 6.6 Holiday mode

Holiday mode can be activated in the ONECTA app. It will put your system into standby. The holiday mode is visualized on your Daikin Altherma and on the Air Conditioning units in the ONECTA App.


For further information, see the DHC Application Guide.

## 7 Operation

After connecting and mounting the DHC Room Thermostat, simple operations are available directly on the accessory.

- **Temperature:** Press the plus and minus buttons (**D + F**) to manually change the temperature. In automatic mode, manual changes are activated until the next point at which the schedule changes. Afterwards, the defined schedule will be activated again. In manual mode, the temperature remains activated until the next manual change.
- **Boost function:** Press the boost button (**E**) briefly to activate the boost function. The boost function will heat up the radiator quickly and shortly by opening the valve.

## 8 Replacing batteries

If the symbol for empty batteries () appears, replace the used batteries by two new LR6/mignon/AA batteries. You must observe the correct battery polarity.

To replace the batteries of the accessory, proceed as follows:

1. Once mounted, the electronic unit (**A**) can easily be pulled out of the wall mounting plate. Grab the sides of the electronic unit and pull it from the wall mounting plate.
2. Turn the electronic unit over to replace the batteries.
3. Insert two new 1.5 V LR6/mignon/AA batteries. Make sure that you insert them the right way round (see *figure 12*).
4. Place the electronic unit back into the wall mounting plate (see *figure 10*).
5. Pay attention to the flashing signals of the LED while inserting the batteries (see „9.3 Error codes and flashing sequences“ on page 31).

After inserting the batteries, the accessory will perform a self-test (approx. 2 seconds). Afterwards, initialisation is carried out. The LED will light up orange and green to indicate that initialisation is complete.



**Attention!** There is a risk of explosion if the battery is not replaced correctly. Replace only with the same or equivalent type. Never recharge non-rechargeable batteries. Do not throw the batteries into a fire. Do not expose batteries to excessive heat. Do not short-circuit batteries. Doing so will present a risk of explosion.




Used batteries should not be disposed of with regular domestic waste! Instead, take them to your local battery disposal point.

## 9 Troubleshooting

### 9.1 Weak battery

Provided that the voltage value permits it, the accessory will remain ready for operation even if the battery voltage is low. Depending on the particular load, it may be possible to send transmissions again repeatedly, once the batteries have been allowed a brief recovery period.

If the voltage drops too far during transmission, the empty battery symbol () and the corresponding error code will be displayed on the accessory (see “9.3 Error codes and flashing sequences” on page 31). In this case, replace the empty batteries by two new batteries (see “8 Replacing batteries” on page 28).

## 9.2 Duty cycle

The wireless DHC accessories operate in the following frequency bands:

- 868,000~868,600 MHz
- 869,400~869,650 MHz

In order to safeguard operation of all devices working in this range, it is legally required to limit the transmission time of devices. Limiting the transmission time minimizes the risk of interference.

The 'duty cycle' is the maximum transmission time. It is the ratio of the time that a device is actively transmitting in comparison to the measurement period (1 hour), and is expressed as a percentage of 1 hour.

If the total amount of allowed transmission time is reached, the DHC accessory will stop transmitting until the time limit is reached.




For example, when a device has a duty cycle limit of 1%, it is only allowed to transmit 36 seconds in 1 hour. After this, it will stop transmitting until the 1 hour limit is reached.

DHC accessories fully comply to this limitation and use 2 frequency bands with a duty cycle of respectively 1 % and 10%.

During normal operation of the DHC accessories, this limit is not usually reached. However it is possible that the limit is reached during start-up or during a fresh installation of a system. In this case, the LED of the accessory lights up red. It may be non-responsive for a short period (max. 1 hour), until the time restriction for transmission has expired. After

this period, it will operate normal again.

### 9.3 Error codes and flashing sequences

Error and flashing codes	Meaning	Solution
Battery symbol (  )	Battery voltage too low	Replace the batteries of the accessory (see “8 Replacing batteries” on page 28).
Antenna symbol flashing (  )	Communication problem with DHC Access Point or connected accessory	Check the connection with the DHC Access Point or the connected accessory.
Lock symbol (  )	Operating lock activated	Deactivate the operating lock via the app or the menu.
Short orange flashing	Radio transmission/attempting to transmit/data transmission	Wait until the transmission is completed.
1x long green lighting	Operation confirmed	Continue operation.

<b>Error and flashing codes</b>	<b>Meaning</b>	<b>Solution</b>
Short orange flashing (every 10 seconds)	Connection mode active	Follow the instructions in the app to add accessory (see “5.1 Connecting DHC accessories” on page 18).
Short orange lighting (after green or red confirmation)	Batteries empty	Replace the batteries (see “8 Replacing batteries” on page 28).
1x long red lighting	Transmission/operation failed or duty cycle limit is reached	Try again (see “9.2 Duty cycle” on page 30).
6x long red flashing	Accessory defective	Contact your reseller.
1x orange and 1 x green lighting (after inserting batteries)	Test LED	After the test LED has stopped, you can continue.

## 10 Restore factory settings



The factory settings of the accessory can be restored. If you do this, you will lose all your settings.

To restore the factory settings of the accessory, proceed as follows:

1. Once mounted, the electronic unit (**A**) can easily be pulled out of the wall mounting plate. Grab the sides of the electronic unit and pull it from the wall mounting plate.
2. Remove a battery.
3. Insert the battery again and long press the system button (**C**) at the same time until the LED quickly starts flashing orange (*see figure 13*).
4. Release the system button (*see figure 14*).
5. Long press the system button (**C**) again until the LED lights up green (*see figure 15*).
6. Release the system button to finish the procedure.  
» The accessory will perform a restart.

## 11 Maintenance and cleaning



The accessory does not require you to carry out any maintenance other than replacing the battery when necessary. Enlist the help of an expert to carry out any repairs.

Clean the accessory using a soft, lint-free cloth that is clean and dry. You may dampen the cloth a little with lukewarm water in order to remove more stubborn marks. Do not use any detergents containing solvents, as they could corrode the plastic housing and label.

## 12 General information about radio operation

Radio transmission is performed on a non-exclusive transmission path, which means that there is a possibility of interference occurring. Interference can also be caused by switching operations, electrical motors or defective electrical devices.



The range of transmission within buildings can differ greatly from that available in the open air. Besides the transmitting power and the reception characteristics of the receiver, environmental factors such as humidity in the vicinity have an important role to play, as do on-site structural/screening conditions.

Hereby, Daikin Europe N.V. declares that the radio equipment type DHC EKRCTRDI2BA is in compliance with the Directive 2014/53/EU. The original declaration of conformity is available from the EKRCTRDI2BA product pages.

<https://qr.daikin.eu/?N=EKRCTRDI2BA>



## 13 Technical specifications

Device name:	EKRCTRDI2BA
Supply voltage:	2x 1.5 V LR6/mignon/AA
Current consumption:	40 mA max.
Battery life (typ.):	5 years
Degree of protection:	IP20
Degree of pollution:	2
Ambient temperature:	0 to 50 °C
Dimensions (W x H x D):	85 x 85 x 22 mm
Weight:	140 g (including batteries)
Radio frequency band:	
F1:	868.0-868.60 MHz
F2:	869.4-869.65 MHz
Maximum radiated power:	10 dBm
Receiver category:	SRD category 2
Typ. open area RF range:	250 m
Duty cycle:	
F1:	< 1 % per h
F2:	< 10 % per h
Method of operation:	Type 1
Software class:	A

**Subject to technical changes.**

## Instructions for disposal



Do not dispose of the device with regular domestic waste! Electronic equipment must be disposed of at local collection points for waste electronic equipment in compliance with the Waste Electrical and Electronic Equipment Directive.

## Information about conformity



The CE sign is a free trading sign addressed exclusively to the authorities and does not include any warranty of any properties.



For technical support, contact your specialist dealer.





Free download of the ONECTA app!



**DAIKIN EUROPE N.V.**

Zandvoordestraat 300, B-8400 Oostende, Belgium