

Operation manual

User interface BRC54A for heating only

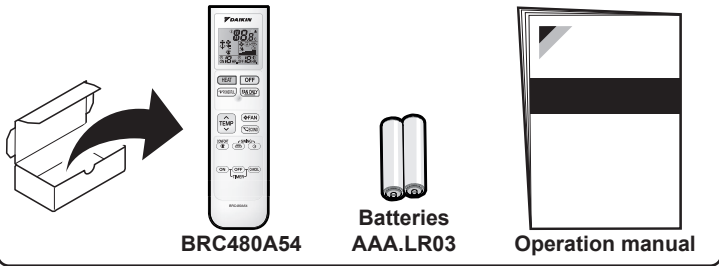


BRC54A

Operation manual
User interface

English

Package



About the user interface

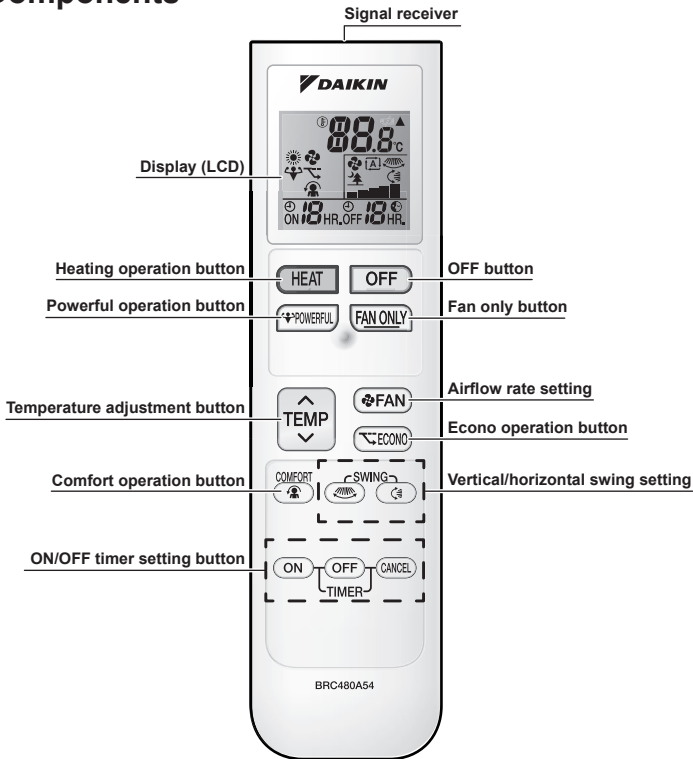
- **Direct sunlight.** Do NOT expose the user interface to direct sunlight.
- **Dust.** Dust on the signal transmitter or receiver will reduce sensitivity. Wipe off dust with a soft cloth.
- **Fluorescent lights.** Signal communication might be disabled if fluorescent lamps are in the room. In that case, contact your installer.
- **Other appliances.** If the user interface signals operate other appliances, move the other appliances, or contact your installer.
- **Curtains.** Make sure that the signal between the unit and the user interface is NOT blocked by curtains or other objects.



NOTICE

- Do NOT drop the user interface.
- Do NOT let the user interface get wet.

Components



To operate the user interface

Aim the signal transmitter at the signal receiver on the indoor unit (maximum distance for communication is 7 m). When the indoor unit receives a signal from the user interface, you will hear a sound:

Sound	Description
Beep-beep	Operation starts.
Beep	Setting changes.
Long beep	Operation stops.

Temperature setting

1 Press or on the button one or more times to set the temperature between 10~30°C. You CANNOT adjust the temperature in **fan only** operation mode.

: Shows the set temperature.

Airflow rate setting

You can choose from following:

	5 airflow rate levels, from "■" to "■"
	Automatic operation
	Indoor unit quiet operation. When the airflow is set to "■", the noise from the unit will be reduced.



INFORMATION

- If the unit reach the temperature setpoint in heating mode, fan will stop operating.

1 Press to change the airflow setting as follows:



To adjust vertical airflow direction

1 Press . appears on the LCD. The flaps (horizontal blades) will begin to swing.

To use fixed position, press when the flaps reach the desired position. disappears from the LCD. The flaps will stop moving.

To adjust horizontal airflow direction

1 Press . appears on the LCD. The louvers (vertical blades) will begin to swing.

To use fixed position, press when the louvers reach the desired position. disappears from the LCD. The louvers will stop moving.

3-D airflow direction

1 Press and . + appears on the LCD. The flaps (horizontal blades) and louvers (vertical blades) will begin to swing.

To use fixed position, press and when the flaps and the louvers reach the desired position. and disappears from the LCD. The flaps and the louvers will stop moving.



INFORMATION

When the unit is installed in a corner of a room, the direction of the louvers should be facing away from the wall. Efficiency will drop if a wall blocks the air.

To start/stop Comfort airflow operation

1 Press to start. The flap position will change, is displayed on the LCD, the airflow rate is set to automatic, position of the flap is down.

Note: Comfort airflow operation is NOT available in **fan only** mode.

1 To stop the operation press .

Result: The flap will return to the position from before the Comfort airflow mode; disappears from the LCD.



INFORMATION

Powerful and Comfort airflow operation CANNOT be used at the same time. The last selected function takes priority. If the vertical or horizontal automatic swing is selected, Comfort airflow operation will be cancelled.

To start/stop Powerful operation

1 Press to start. is displayed on the LCD. Powerful operation runs for 20 minutes; after that, operation returns to the previously set mode.

1 Press to stop the operation. disappears from the LCD.
Note: Powerful operation can only be set when the unit is running. If you press ; disappears from the LCD.



INFORMATION

Powerful operation CANNOT be used together with Econo and Comfort airflow operation. The last selected function takes priority. Powerful operation will NOT increase the capacity of the unit if it already operates at maximum capacity.

To start/stop Econo operation

1 Press to start. is displayed on the LCD.

1 Press to stop the operation. disappears from the LCD.



INFORMATION

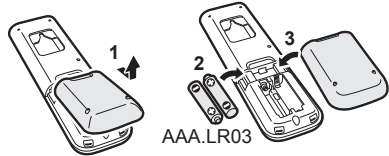
- Powerful and Econo operation CANNOT be used at the same time. The last selected function takes priority.
- Econo operation reduces power consumption of the outdoor unit by limiting the rotation speed of the compressor. If power consumption is already low, Econo operation will NOT further reduce power consumption.

Before operation

Insert batteries

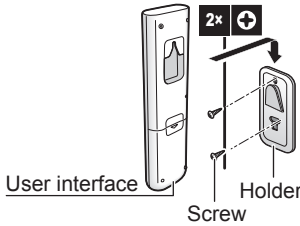
The batteries will last for about 1 year.

- 1 Remove the back cover.
- 2 Insert both batteries at once.
- 3 Put the cover back.



Fix the user interface to the wall

- 1 Choose a place where the signals reach the unit.
- 2 Attach the holder with screws (delivered with the unit) to the wall or a similar location.
- 3 Hang the user interface on the user interface holder (delivered with the unit).

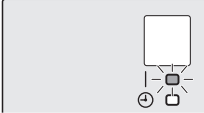


Start/stop operation

1 Start operation by pressing one of the following buttons.

Mode	Press	Symbol on the display
Heating operation		
Fan only operation		

Result: The operation lamp light up.



2 Press to stop operation.

Result: The operation lamp goes off.

Start/stop OFF timer operation

- 1 Press . is displayed on the LCD and the timer lamp lights up.
- 2 Press again to change the time setting (between 1 to 12 hours)

Example: If 5 HR. is set when the unit is operating, operation will stop after 5 hours.

1 Press to cancel the setting. and the time setting disappear from the LCD and the timer lamp goes off.

Start/stop ON timer operation

- 1 Press . is displayed on the LCD and the timer lamp lights up.
- 2 Press again to change the time setting (between 1 to 12 hours)

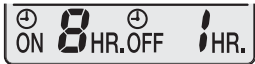
Example: If 2 HR. is set when the unit is NOT operating, operation will start in 2 hours.

1 Press to cancel the setting. and the time setting disappear from the LCD and the timer lamp goes off.

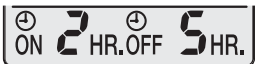
Combine OFF and ON timer operation

You can set both OFF timer and ON timer at once.

Example:



If set when the unit is operating, Operation stops in 1 hour and then starts 7 hours later.



If set when the unit is NOT operating. Operation start in 2 hours and then stops 3 hours later.